



gather.

grow.

2012 ANNUAL REPORT

go!

First Presbyterian Church of Edmond, Oklahoma

gather

From the Senior Pastor 1
Session Members & Diaconate 2
The Staff of FPCE 3
Church Membership 4
Communications 5
Evangelism & Assimilation 7
Worship Committee 8
Music Ministries 9

go!

Denominational Relations 19
Missions 20
Board of Deacons 21
Congregational Care 22
Early Childhood Program 23
Boy Scouts 24

grow

Finance & Property Committee 10
Personnel Committee 11
Treasurer's Report 12
Income & Expenses 13
Adult Discipleship Committee 14
Student Ministries 15
Kids' Ministries 16
Childcare/Preschool Ministries 17
Presbyterian Women 18

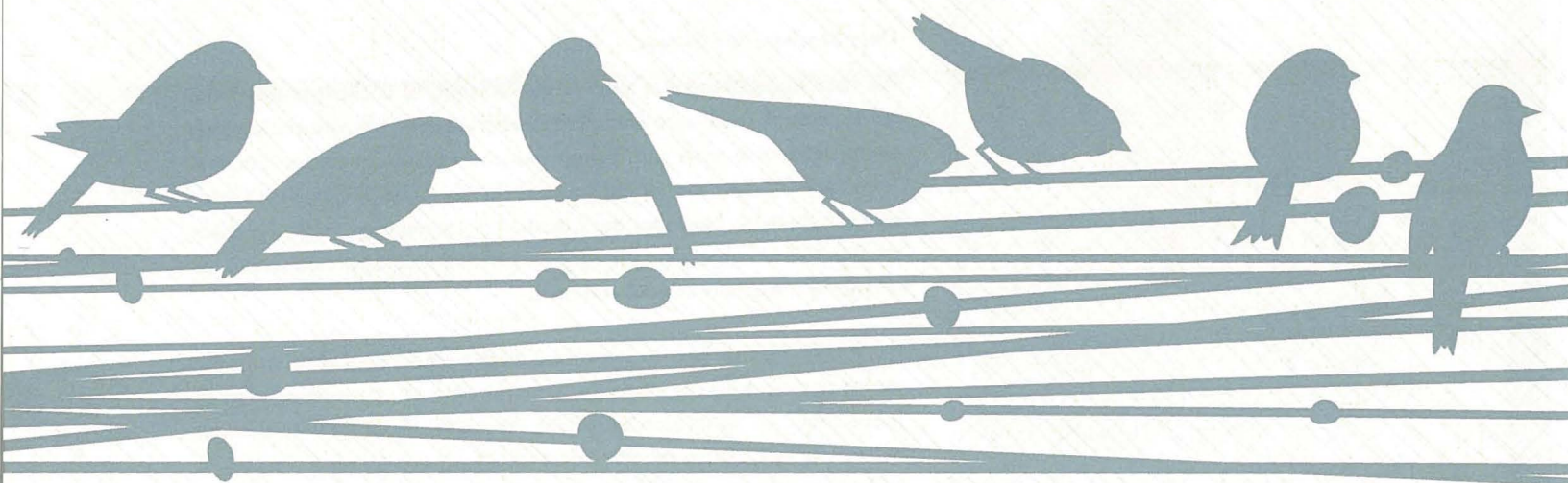


**FIRST PRESBYTERIAN
CHURCH OF EDMOND**

being disciples...making disciples!

1001 South Rankin Street | Edmond, Oklahoma 73034
405.341.3602 (phone) | 405.341.5248 (fax) | www.fpcedmond.org





gather

From the Senior Pastor



Dear Brothers and Sisters,

We have come through a year of denominational challenges that have left us stronger and more unified than perhaps ever. As you know, much of our leadership time and energy was given to the quest for dismissal from the PC(USA) and for entry into ECO (Evangelical Covenant Order of Presbyterians). Now that the transition is complete, we must lay aside the mindset of contending for our freedom and reconstruct our vision for spreading the gospel in word and deed.


It will take a bit of time to sweep out all the emotional leaven from our recent past, but we are eager to move forward in constructive ways to follow Jesus on his mission to reclaim the world. About a year ago, our elders created a simple refrain to express the process by which we seek to be *"a community of joyful Christians, being equipped as disciples and making disciples for Jesus Christ."* The process is summed up in three words: ***Gather – Grow – Go.***

We believe these three functions encapsulate the main elements of Christian discipleship. We **gather** as a community (and in subsets of community) to worship, fellowship, encourage, share our dreams and laughter, tears and concerns. We **grow** as disciples when we expose our lives to the Word of God and voluntarily make ourselves accountable to reshape our thinking and retool our lifestyles to please God as the Holy Spirit guides us to become more like Jesus Christ. We **go** into the world as our hearts increasingly reflect God's love for lost and lonely people. As the Father sent His Son into the world to seek and save the lost, the Son has sent his disciples out to carry and embody his gospel.

Our dream as FPCE leaders is that all our members and friends will find themselves somewhere in this process already, and will become eager to move further along in their walk of faith. We never give up gathering together, but add to that practice the commitment to spiritual growth, and as we grow we experience the Spirit's tug to move out into the world to share the presence of Jesus with others. As those others are attracted and want to know more, we invite them to join us in gathering with our church family, and they then begin the process: *Gather – Grow – Go.*

And so, Jesus' command to go and make disciples takes on clear shape in our midst. This will inevitably lead to numerical growth. As that happens, our dream is to plant new churches in the larger metro region, fellowships which will have this same DNA: *Gather – Grow – Go*, to the glory of God! Exciting, deepening times are ahead!

With you in the journey of following Jesus,


Mateen Ellass, Senior Pastor

Members of the Session

Class of 2012

Bill Bergner
Stephen Earnest
Sarah Montgomery
Jayne Roberts
Amy Schulke
Jayne Spies
David Timberlake

Class of 2013

Kristin Emerson
Nancy Foringer
Andy Fugitt
Bob Laundhardt
Kathy Martin
Amy Schulke
Don Schiesz

Class of 2014

Jeannie Bath
Jim Cahalan
Georgia Fiering
Laura Ganz
Brian Horner
Robert Menja
Ann Ozan Willis (resigned in 2012)

Class of 2015

Harry Birdwell
Wes Fryer
Ruthie Hast
Sonya Humes
Mark Moore
David Richard
Robin Riley

Ministers

Rev. Mateen Elass
Rev. Matt Jones
Rev. Dale DePue

Congregational Care

Martha Turner, CLP

Clerk of Session

Libby Cahalan

Diaconate

Class of 2012

Terri Dahlgren
Julie Higginbotham
Tom Humes
Judy Morrison
Randy Rognas
Barbara Shelton
Clyde Stevens
Gail Yanko

Class of 2013

Suzi Boydston
Mary Kaye Foster
Holmes Fuller
Alice Hager
Richard Hammervold
Jared Looper
Jennifer Postlethwaite
Tom Richter

Class of 2014

Michele Baker
Traci Eliot
Judy Gross
David Houck
Janet Kennedy
Dale Shogren
Sharon Pace
Mark Veazey

Class of 2015

Sharon Boecking
Gwen Boots
Nancy Brown
Bill Hainer
Carol Lamb
Terri McGee
Judy Morrison
Richard Woodmansee

One Year Deacon

Tanner Bailey (2012-13)

Moderator

Holmes Fuller (2012-13)

Vice Moderator

Michele Baker (2012-13)

Secretary

Mary Kaye Foster,
(2012-13)

Ex Officio

Martha Turner, CLP

Staff Members

Pastoral Staff

Rev. Dr. Mateen Ellass	Senior Pastor
Rev. Matt Jones	Associate Pastor
Rev. Dale DePue	Pastoral Assistant
Martha Turner, CLP	Congregational Care Coordinator
Alice Trithart	Administrative Assistant to Sr. Pastor
Debbie Spencer	Receptionist/Administrative Assistant
Jean Carroll	Food Coordinator

Business Office

Jim Booher	Director of Finance & Human Resources
Tracey Rice	Financial Assistant

Music & Worship

Jim VanHemert	Minister of Music
Ben Meek	Director of Contemporary Worship & Music
Terry Attebery	Director of Contemporary Choir
Margaret Eaton	Organist
Denise Bergner	Wedding Coordinator

Communications

Zena Nipper	Print Media Coordinator
Bill Crouch	Audio/Visual Coordinator
Melissa Tisdell	Internet Technology Coordinator
Tom Boles	Sound Engineer

Kids' Ministries

Linda Birsner	Director of Kids' Ministries
Shelly Fryer	Kids' Ministry Associate-Childcare/Preschool
Terrie Jones	Childcare Program Coordinator

Early Childhood Program

Mary Singleton	Director of Early Childhood Programs
Debbie Frantz	Administrative Assistant to Early Childhood Programs

Student Ministries

Brian Wagner	Director of Student Ministries
Rachelle Robinson	Director of High School
Christy Ford	Student Ministries Program Coordinator

Facilities

Marvin Houston	Facilities Director
Cloy Netherton	Scheduling/Head Custodian
Jim Pennington	Building Superintendent
Esmeralda Davila	Custodian
Bill Thoele	Custodian
Teresa Hartley	Custodian

Library at First Pres.

Carol Harrison	Port/Mitchell Library
----------------	-----------------------

Church Membership

New Members & Reinstated Members in 2012

Ralph Abrams	Anthony DeBenedictis	Stephani Nichols
Sharon Abrams	Cindy DeBenedictis	Kaila Nickel
Melisa Banks	Mark Davis	Mark Nickel
Candace Becker	Shelly Dent	Brooke Ogle
John Becker	Mary Elliott	Jimmy Ogle
Nick Becker	Lisa Fouquette	Robert Renouard
Tom Boles	Alex Fryer	Diana Renouard
John Brese	Dennis Garton	Sara Ann Scott
Andrea Buckley	Greg Graham	April Shaw
Jay Buckley	Joann Graham	Phil Shaw
Damen Burris	Gayle Jones	John Spearman
Jennifer Burris	George Marsh	Shelley Spearman
William Chandler	Lori McKinnon	Frank Wood
Esmeralda Davila	Mitch McKinnon	Tyler Wood
Kristin Davis	Brandon Nichols	

Active Members

December 31, 2011

1,738

+

*2012 Profession &
Reaffirmation of Faith*

56

2012 Certificate of Transfer

13

Other Gains 28

Total Gains: 97

—

Certificate of Transfer

23

Deaths 7

Other 400

Total Losses: 430

=

1,405

Active Members

as of December 31, 2012

Confirmation Class of 2012

Emily Alarcon	Jacob Houck	Ashton Mason
Ashlee Barr	Anna Humes	Jake McKinnon
Adam Chapman	Julianna Imel	Austin McLean
Regan DeQuasie	Will Linihan	Yvonne Menja
Hannah Rose Frohling	Kate Lipscomb	John Metcalf
Elizabeth Hartzog	Shelby Mann	Savannah Sturges

Deaths in the Year 2012

Jess VanHemert <i>February 5, 2012</i>	Betty Denny <i>March 25, 2012</i>	Curtis "Doc" Berryhill <i>September 20, 2012</i>
Shirley Garrison <i>February 20, 2012</i>	Brad Jones <i>March 31, 2012</i>	Carolyn Vance <i>October 11, 2012</i>
Margaret Estep <i>March 9, 2012</i>	Carol Hendley <i>September 17, 2012</i>	Marvin Pearson <i>November 26, 2012</i>

Communications

In many ways the FPCE Communications department plays a role in all three principles of “The Simple Church” philosophy.* The idea is to “Gather, Grow, and Go” with a unified mission and vision of the church as a whole in mind. The key to successful communication as the church moves towards its vision is to keep messages simple, clean, straightforward, clear and consistent.

The Communications budget projected for the year 2012 was for the most part an accurate, realistic depiction of actual expenditures. Even still, expenditures came in slightly over-budget largely due to some unanticipated costs. In the area of print some of the cost incurred was from the printing & mailing of letters and other materials which played an essential role in communicating to the congregation during the 2012 “Connections” campaign that led up to the time of the Congregational Vote for Gracious Dismissal in January 2013. Increased volume and expenses of in-house printing were also seen because the Communications department print budget absorbed (in 2012) and continues to absorb a portion of the costs of the utilization of printers and copiers in order to facilitate the needs of FPCE’s growing ministries. Fortunately some of this print expense was offset by the discontinuation of producing weekly inserts to the church bulletin (a savings of approximately 20,000 color prints per year). Costs also incurred as Communications continued to maintain and improve the technology/networking of the FPCE computer system and meet the church’s growing technical/audio-visual needs.

Bill Crouch has been a wonderful addition to our team as Audio/Visual Coordinator (2/2012). Melissa Tisdell (IT) and Zena Nipper (print/web) continue to do an excellent job in their areas. Associate Pastor Matt Jones oversees the team.



Print Media Coordinator

Zena Nipper

Audio/Visual Coordinator

Bill Crouch (joined 2/2012)

IT Support Coordinator

Melissa Tisdell

Sound Engineer

Tom Boles

Ministry Partners

Bob Brown, Visual Technician

Tom Humes, Visual Technician

Ex Officio

Rev. Matt Jones

Accomplishments in 2012

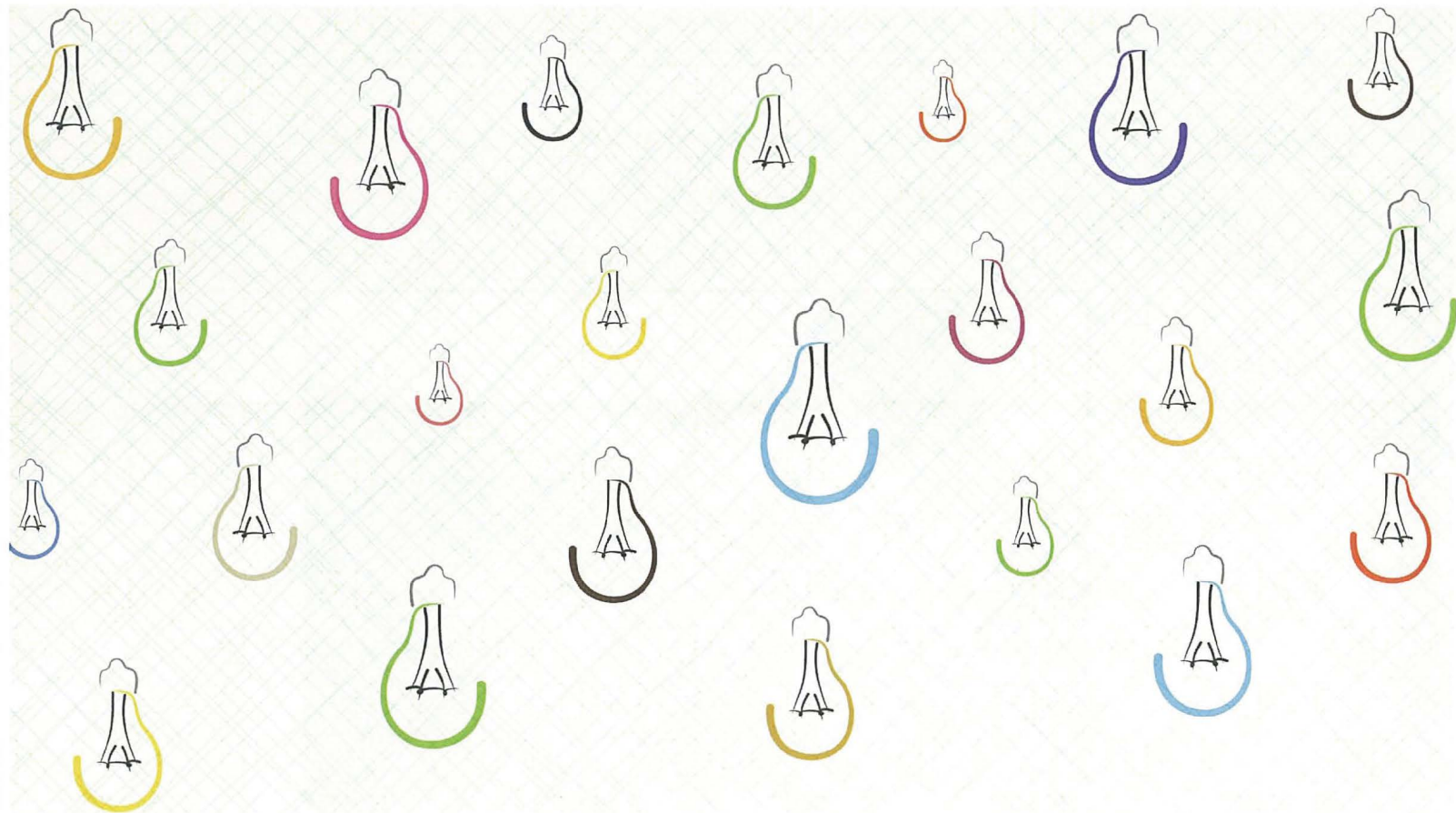
Audio/Visual Communications

The year 2012 saw the creation of a new position within Communications- Audio/Visual Coordinator. Bill Crouch transitioned from High School Director to this new position. The use of video created through Bill’s expertise has served to increase FPCE’s reach, improve FPCE’s on-line presence and enhance the FPCE worship experience. A \$12,000 budget was used to create:

- » A video production studio equipped with lights, backdrops, sound, teleprompter, cameras and tripods
- » Over 40 videos produced in-house
- » Digital Media Signage
- » AV in facility updated and maintained
- » Planning Center Online (used to organize and stream line worship planning)
- » Photo directory

Print/Web/Marketing

- » Roll-out of the FPCE Branding Standards and Policy which serves as the guide to ministries and departments for the proper utilization of the new FPCE logo in media and advertising and the permanent replacement of the discontinued blue-gray logo
- » Increase in the weekly eNewsletter contact reach & distribution (from 360 subscribers to 724 - including both member and non-member subscribers); keeps members informed on a weekly basis
- » Movement towards the strategic utilization of social media, web and video as vehicles for FPCE communications, outreach and promotions



» Increased level of reach to the **Community-at-Large** by investing in and establishing a stronger role/presence in the community via print and web advertisement (OPUBCO, Metrofamily Magazine, Edmond Life & Leisure, Edmond Sun, etc.) and media releases

» Creation of a new visitor's guide the **"FIRST LOOK"** which is updated quarterly and is designed to attract new visitors to FPCE and also provides general, up-to-date information to new and existing members

» Implementation of the strategic marketing/advertising plan for the **RZIM (Ravi Zacharias International Ministries) Conference on Understanding and Answering Islam**. The conference was held in November 2012 at FPCE. A variety of media was utilized to reach the public and ensure the success of this event (print, radio, video, tv, social media, internet & television (interview of Mateen on KSBI 52). Through partnering with and combining efforts with RZIM, Mo Anderson and christian leaders of FPCE and in the community, the conference was said to be huge success. Expenses and advertising of the RZIM conference was generously covered through a donation from a church member.

» Marketing and Advertisement of **OIM (One Incredible Moment) 2012** - a Christmas musical production presented to the public and to members on December 14-16 that was sponsored and led by FPCE Music Ministries

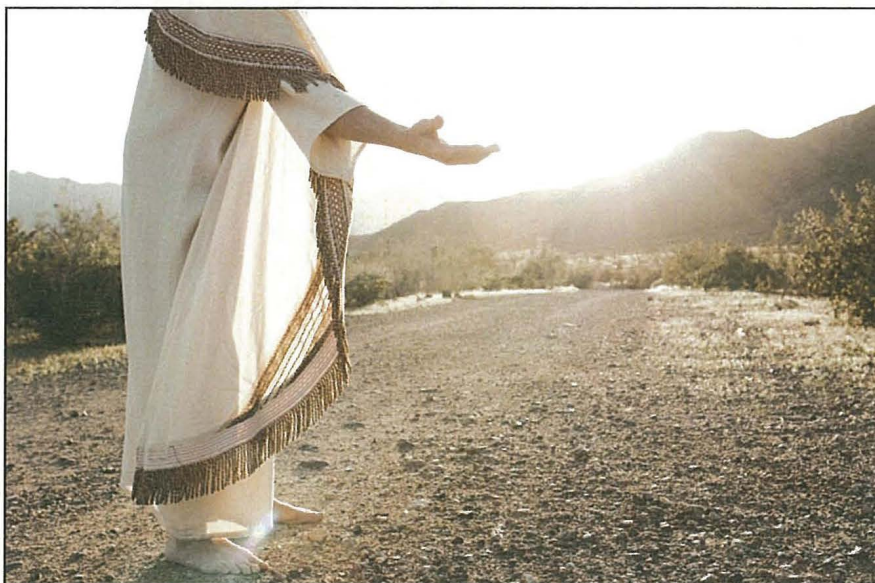
» Facilitated the graphic/communication needs of the **FPCE Congregational Communications Task Force** for the 2012 "Connections" campaign which began mid-year and ended on the date of the congregational vote that took place in January of 2013

» Provided continued creative and technical support for worship, FPCE ministries, missions (internal & external), committees and pastoral staff

Zena Nipper
Print Media Coordinator

Bill Crouch
Audio/Visual Coordinator

Evangelism & Assimilation Committee



Jeannie Bath, Chair/Elder
Bob Launhardt, Elder

Members

Henry Boecking
Sharon Boecking
Kenny Brown
Diane Brown
Crystal DePue
Judy Gross
Charlotte Greaves
Julianna Imel
Karla Launhardt
Sheree Shaw

Ex Officio

Rev. Dale DePue

Accomplishments in 2012

» Initiated:

The Visitor Welcoming Team: Bags with yellow card welcome message, FPCE information and baked goods taken to new visitors each week

Lunch with Pastors: Committee hosts a casual lunch for visitors and pastors 1-2 times per quarter (first one in November)

» Organized:

Follow Me Sunday in August: Opportunities to learn about and join in ministries of FPCE

Yellow Card Outreach to Visitors: Yellow cards sent to new and regular visitors each month

Hosted Voters on Presidential Election Day: Drinks and donuts given to voters in lines.

» Supported:

New Members Classes and follow-up

Rolling Green Apartment Ministries

Festival of Faith 2013 Planning

ECP Fall Open House in August

RZIM Conference on Islam in November

One Incredible Moment in December

Worship Committee



Andy Fugitt, Chair
Ruthie Hast, Elder

Members

Ben Meek
Letty Ann Schiesz
Jim VanHemert
Terry Attebery
Mike Sharp

Ex Officio

Mateen Ellass

The Worship Committee functions to work with the pastors and music staff in the planning and implementation of our weekly worship service, along with other services throughout the year.

2012 was a year of significant change in the worship life of the church. In June of 2012, after several months of study and prayer, we went to one combined Sunday worship service instead of the two services, one traditional and one contemporary, which had been the case for many years. In August of 2012, the Session voted to continue with one Sunday worship service indefinitely. The single combined worship service has enabled the whole body of the church to worship together at one time and has brought new and varied ways to worship. The Worship Committee continues to engage the congregation seeking to enhance worship.

As in the past, the Worship Committee has carried out its roles in the monthly preparation and service of communion, the provision of ushers and weekly chancel prayer partners. The committee also works with the staff in regard to monthly Healing and Wholeness services.

Music Ministries



Chancel Bells

Directed by Terry Attebery

Combined Choir

Directed by Jim VanHemert
and Terry Attebery

JuBELLation

Directed by Jim VanHemert

Kids' Handbells

Directed by Jim VanHemert

Sanctuary Choir

Directed by Jim VanHemert

True North

Directed by Ben Meek

In 2012 (as in previous years) the Ministry of Music continued its vigorous pursuit of preparing and presenting beautiful and inspiring music for worship. However, regardless of how well leaders plan or dream, without the faithful commitment of our many volunteers as well as our staff, it would difficult, if not impossible, to reach our goals each week.

We were especially blessed by and fortunate for:

» The Kids' musical "PARABLEOOZA!" and Missy Attebery, Michele Baker, Linda Birsner, Shelly Fryer plus the many other adults who facilitated this kids musical – a musical that taught the children and listeners about the parables that Jesus taught. It was presented at both worship services on April 22, 2012.

» The Blackwelder Brass Quintet from Oklahoma City University gave a wonderful dimension to the eight Sundays throughout the year.

» In June, when we moved from two worship services to one, the Sanctuary and Contemporary Choirs merged creating a stronger group including several teenagers.

» A wonderful "NIGHT OF PRAISE" under the leadership of Ben Meek and presented by True North on Thursday, October 18.

» Chancel Bells and JuBELLation (our student handbell choir) contributed to worship as well.

Under the direction and guidance of Terry Attebery, ONE INCREDIBLE MOMENT returned to our church for four nights in December. New to those presentations was the use of digital sound, the latest in lighting equipment that provided stronger and more flexible lighting which generated far less heat than in years past, and, the sale of reserved seats which along with donations and a small amount of money from the music budget did not require additional funds that would have put a strain on the church's general budget.

We look forward to what God has in store for us in 2013 and we covet beyond measure the love and support of our congregation and the pastoral staff.

Jim VanHemert
Minister of Music

A flock of stylized birds in various colors (yellow, orange, blue, black, and green) is shown in flight, circling around a dark silhouette of a tree on the right side of the image. The background is a light green color with a subtle, repeating diamond-shaped pattern.

grow

Finance & Property Committee



Georgia Fiering, Chair
Mark Moore, Elder

Treasurer

Rick Roberts

Members

Tim Hopkins
Steve Kinney
Gary Moore
David Timberlake
Bob Turner

Staff

Jim Booher, Finance
Marvin Houston, Property

Ex Officio

Mateen Ellass, Senior Pastor

The mission of the Finance and Property Committee is to provide oversight of the management of the church's financial resources and oversee the management and maintenance of all church property.

2012 was a challenging year of financial resource management. With significant concerns impacting the life of our church in a short time frame, we found ourselves in problematic circumstances. The financial challenges were created in part by a decline in attendance numbers. As of October 31, 2012, the church experienced a budget deficit of \$188,847. On the other hand, by carefully managing operations budget expenses were reduced by \$75,222.

At the end of 2012, we were able to lower the balance of our mortgages with Bank of the West to \$ 2,955.988. During the spring, the Finance and Property Committee pursued refinancing possibilities that will be completed in the first quarter of 2013.

Throughout the year, Facilities Director, Marvin Houston, analyzed cost saving opportunities for our physical plant. With the help of his staff and volunteers from the congregation, Marvin has been able to operate within the budget. Our custodial staff works tirelessly throughout the year preparing meeting spaces for the many groups that are hosted by FPCE, as well as groups from our surrounding community that request to use our beautiful facility.

Georgia Fiering
Chair

As we look forward to 2013 we recall 2 Corinthians 9:7-8:

“Each man should give what he has decided in his heart to give, not reluctantly or under compulsion, for God loves a cheerful giver.”

Personnel Committee



Don Schiesz, Chair/Elder
Harry Birdwell, Elder

Members

Barry Davis
Ann Hawkins
Keith Montgomery
Linda Veazey

Ex Officio

Rev. Mateen Ellass

To assist the Session in the implementation of its Book of Order responsibilities, the Personnel Committee provides support and guidance to church staff members and committee chairpersons in the areas of recruiting, hiring, compensation, benefits, employee relations, personnel policy formulation, and performance management.

While the Personnel Committee serves in an advisory capacity to the Session, the Session is responsible for the overall health and ministry of the church. Our church's by-laws state that the Personnel Committee shall be made up of at least one Elder or Deacon, the Immediate Past Chairperson and two or more Members-at-Large from the congregation.

Your Personnel Committee's activity during 2012 included the following:

- 1 **Provided guidance and assistance in the personnel changes and additions during the year.** Reviewed and approved compensation package for Associate Director High School for Student Ministry Program, Established salary range for Early Childhood Director position of Early Childhood Program
- 2 **Developed and/or approved job descriptions for:** Parish Associate, Pastoral Assistant, Information Systems Support, Head Custodian and Scheduling Coordinator
- 3 **Developed, reviewed and/or approved personnel policies for:**
 - » Tuition Reduction for full time and part time employees of Early Childhood Program,
 - » Relocation Expense Policy for Newly Hired Employees, Nepotism Policy, and
 - » Updated existing Policy for Prohibited Items to include firearms and weapons
- 4 **Reviewed Dental & Health Insurance options** from ECO and made "package" recommendation for Session approval
- 5 **Revised Organization Chart** to reflect reporting changes as result of resignation of Executive Pastor and addition of Pastoral Assistant

Don Schiesz
Chair

Treasurer's Report



2012 was a wonderful year! Our members generously gave to God's work \$2,332,225, a one percent increase over the previous year. We were good stewards of these funds and expenses were only \$2,329,609. Thus we experienced a large improvement over the previous year, and ended the year with a small surplus of \$2,616.

Contributions to Stone by Stone IV for 2012 totaled \$364,806 for the year. We made payments of \$175,809 to reduce the principal, plus interest payments of \$123,624 for the year. At year end, F&P negotiated a new loan agreement to reduce our interest payments for the future life of our loan. This will enable us to make larger payments against our principal balance that will allow us to pay off our Stone by Stone mortgage a year in advance. Our remaining sanctuary loan balance has now been reduced to \$2,679,974.

During the year the public accounting firm of Bell & Rhodes performed an audit of the financial statements of FPC of Edmond in accordance with Generally Accepted Accounting Standards as of December 31, 2011. We received a "clean" audit opinion and there were no negative findings as a result of their audit.

As we start a new year, we will see our gifts move our church forward with a new purpose. Our Church will continue to grow and be a blessing to our membership, the community, and the world.

Thank you for your generosity during the past year!

Rick Roberts
Treasurer

INCOME & EXPENSES

in the year

2012

INCOME

	<i>Annual Budget</i>	<i>Actual Amounts</i>
Pledged Receipts	\$2,079,600	\$1,870,343
Non-Pledged Identifiable	335,000	430,404
Prior Year Pledges	6,000	400
Loose Offering	18,500	16,215
Building Usage	6,500	9,188
Interest Earned	250	41
Other Income	3,750	634
Prior Year Deficit Reduction	-	5,000
<i>Total Income:</i>	<u><u>\$2,449,600</u></u>	<u><u>\$2,332,225</u></u>

EXPENSES

Denominational Relations	65,000	60,149
Missions	100,000	99,611
Music/Worship	23,000	16,597
Children's Ministry	26,000	21,663
Youth Ministry	25,350	21,341
Adult Ministry	6,000	3,530
Assimilation	6,000	3,099
Communications	82,000	93,089
Congregational Life	7,000	5,662
Congregational Care	2,670	2,678
Program Administration	1,870,080	1,786,981
Facilities and Support	236,500	215,208
<i>Total Expense:</i>	<u><u>\$2,449,600</u></u>	<u><u>\$2,329,609</u></u>

Increase / Decrease In Cash: +\$2,616

Adult Discipleship Committee



Laura Ganz, Chair/Elder

Members

Marsha Bath,
Adult Sunday School

Amy Schulke,
Women's Ministry

Don Boyd,
Men's Ministry

Ministry Partner

Carol Harrison,
Library & Gifts Class

Ex Officio

Rev. Dale DePue



The 2012 Adult Discipleship Committee focuses on the development of the spiritual growth of adult members in First Presbyterian Church of Edmond by offering Adult Sunday School, Women and Men's Bible Study, Gathering, and the church Library.

During 2012 the following events and opportunities were offered:

» **Adult Sunday School:** Several classes were offered during the Spring, Summer and Fall of 2012 with a mixed balance of scriptural study and spiritual application. In the Fall of 2012, a new young adult class taught by Steve Hurst was offered. Every available classroom was used for classes with an average Sunday attendance of 281. In addition to traditional means of communication, the committee utilized the Church website, TV monitors, the Drama team, and "First Look" guide for visitors (new and existing) as new means of communication.

» **Women's Ministries:** The Women's Ministries offered weekly small group Bible studies, in the Spring, Summer and Fall at a variety of different times to meet the needs of women in the church and were well attended. Additionally, Women's Ministries hosted "Your Wild and Wonderful Life" seminar in the Fall of 2012.

» **Men's Ministries:** The Men's Ministries offered weekly Bible studies throughout the year, including Friday mornings which were well attended. Additionally, in the Spring of 2012, it offered a Men's Movie Night featuring the movie "Courageous" with over 60 men in attendance.

» **The Gathering:** Wednesday nights' "The Gathering" was offered both in the Spring and the Fall with steady attendance. However, it was noted that in the Spring session attendance began to decline in mid March because of conflicts with school activities. Additionally a Seder dinner was offered and well-attended.

» **Library:** The Library at First Pres. continues to review, purchase and update its materials offered to members. We began a quarterly review of new materials which is published in the "First Look" guide for visitors and members.

Laura Ganz
Chair/Elder

Student Ministries

Student Ministries is relationally focused, as well as externally focused. Through these relationships our desire is for students to love God, love others, and serve. The avenues for these relationships to grow are varied: Lift, Sunday School, small group meetings, Tiger Club, mission trips and retreats. We also support Boy Scout Troop #78.

» **LIFT:** Middle School and High School meet together Wednesday nights for a period of worship, study and fellowship. An average of approximately 70 youth and 15 adult leaders participate weekly. Both students and adults assume roles for connectors, welcomers, and leaders.

» **Sunday School:** While the curriculum put in place four years ago (Student Life) remains, the format has been revamped to provide more cohesion and energy. Brian Lamb has assumed the role of Sunday School coordinator and starts each Sunday in a large group setting, teeing up the lesson for the day before each class breaks into small groups led by Shepherds and Teachers. The High School Seniors and Juniors are studying the True U video series developed by the Truth Project, accompanied by guest lecturers, to prepare them for life beyond high school. Averaging throughout the year, 54 youth and 21 adult leaders participate weekly.

» **8th Grade Confirmation Class:** Led by Jason Elliott, the 2012 class had 28 students, and the 2013 class has 23 students. Approximately 14-16 adult leaders assisted.

» **Tiger Club:** a new after-school program serving 26 Central Middle School children that meets weekly to provide tutoring, social interaction and life skills.

» **Mission Trips:** Again this year ten high school students, Brian Wagner, Damon Burris, David Houck, and Rachelle Robinson traveled by van to West Virginia to repair homes in the state's poorest county under the supervision of Craig Snow's Project Rebuild, a part of HopeForce International. We continue to serve the youth of the Pauline Mayer shelter through the Servant Hood Tree at Christmas, providing gifts and a party.

» **Retreats:** Celebration #32, moderated by Allison Godwin and #33, moderated by Ty Gatewood took place at Canyon Camp, with 125 to 156 youth and adults participating. Other retreats this year were in Tulsa; Windemere middle school summer camp in Missouri or held in-house.

» **Summer Activities:** Several summer activities were planned for both Middle School and High School, including a trip to Six Flags and Hurricane Harbor and Burrito Thurstito (lunch every Thursday).



» **Middle school** had bible study and swim parties on Monday afternoon. An end of the summer PIG-Out at Vox was held with a roasted pig and outdoor water & mud fun!

» **Fall Activities:** The fall brought new opportunities for the middle school to serve the community. During Fall Break Alyssa held a three day event in Edmond. The students stayed at the Blaess retreat home and served the community by working at the food bank, helping around the church property, and going to the Urban Mission to work. Rachelle Robinson had various high school events including going to the State Fair, paintball and the Nutcracker Ballet.

» **Boy Scout Troop 78:** 68 boys and 91 leaders continue to be supported by our church, which provides facilities and resources.

Nancy Foringer
Chair



Committee Members

Nancy Foringer, Chair/Elder
Brian Horner, Elder

Members

Robert Reid
Charlotte Houck
Jason Eliot
Chris Martin
Brian Lamb

Director of Student Ministries

Brian Wagner

Associate Director for Middle School Ministries

Alyssa Dees (departed 1/2013)

Associate Director for High School Ministries

Rachelle Robinson (joined 5/2012)

Program Coordinator

Christy Ford

Ex Officio

Rev. Matt Jones

Kids' Ministries

We had a great year in Kids' Ministries with a wonderful committee! The year began with a terrific trip with 4th and 5th graders and their parents to SuperStart Live in Dallas, Texas. The kids laughed, screamed, played, worshipped and learned "What they are made for!"

During the cold weather, we had a chili cook-off fundraiser which raised money for camp scholarships that included: SuperStart!, Sports Camp and Camp Kidjam. Many children heard the gospel presented at these camps because of the generosity of those attending the chili cook-off!

In April, we celebrated the resurrection of Jesus by giving Easter baskets to the children at the City Rescue Mission and Rolling Green Apartments along with helping with an Easter egg hunt. The children also led worship with the musical, Parablelooz. We celebrated all of the many people that share Christ with children in many various capacities throughout the year at our Servant Celebration.

The summer was kicked off with our annual fifth grade Mother/Daughter tea at Inspirations Tea Room and offered a new weeklong Sports Camp, "Beyond the Gold" led by UW (Uncharted Waters). We also lived in the truth that "All things are possible with God" as we soared through the entire summer with our Sky VBS during our Sunday school hour! Families were sliding into a wonderful family fun day at Vox Printing with a huge water slide, mud pit, cookout and lots of other games. A group of 3rd-5th graders and fearless leaders "Turned it Up" at Camp Kidjam in Denton, TX in July. We also served at the Regional Food Bank and The Oklahoma Christian Senior Apartments. We played at Bouncin Craze, Martin Nature Center and other local parks with Popsicles in the Park, and we ended the Summer with a huge pool party at Pelican Bay.

We continued our Rolling Green Outreach ministry in collaboration with other churches during the summer by sharing sack suppers and lots of fun and games. This occurred each Thursday evening at the apartment complex. Throughout the year, we continued to have weekly Backyard Bible Clubs, Little Lambs, monthly holiday parties, a Santa store, and meet the needs of individual families. As relationships grew, we saw the mission truly being lived out by bringing the love of Christ to a community in need. In the fall of 2012, we held a great parent/teacher orientation, encouraging everyone to make the discipleship of our children a priority. We began our Sunday School rotation with "friendship" and "forgiveness" as kids headed back to school. BLAST resumed on Wednesday evenings and the faith of our kids really took off with "What's in the Bible."



We started at the beginning with Genesis and Exodus, as we plan to continue to go through the entire Bible. Amazing insights and knowledge of His Word opened our eyes to God's Big Story, and how we write the story of our lives as a part of His. The 5th graders jumped into J12 where they found that Jesus said that He must be about His Father's business when He was about their age and thus should we!

Funtastic Friday (parents' night out) events were held monthly. It was a wonderful time for the kids to play together and have a fun evening while giving the parents a chance for some alone time. We went to Chester's Party Barn for a hayride and cookout, scoured the neighborhoods looking for something "Bigger and Better" while collecting canned goods and went to "The Living Nativity" at Boys' Town Ranch.

We once again ended the year by collecting over 100 shoeboxes to share with kids around the world for Christmas. We went caroling for the Hope Center to share the joy of this season. During Advent, we discovered the true Miracle in the Manger. May Jesus have all of the glory as the children begin and discover their relationship with Jesus, continue to grow in it, and respond by sharing His love with others!

Linda Birsner
Director



Childcare & Preschool Ministries

Our Childcare and Preschool Ministries continues to grow strong and healthy in 2012! We have seen a continued growth in young families becoming involved in the life of the church. With the change to one service, we created Donut Church a brand new learning adventure with Rob Evans The Donut Man. Bible story lessons provide children the opportunity to build positive Christian relationships through bible based activities for ages 3-5 during adult Worship time.

Little Lambs

Our outreach ministry which was continued in 2012 has continued to be a positive growth area. Its evangelistic approach to ministry for 2's and 3's has enabled us to focus on 8 students at a time for 6 weeks of classes. We had 20 children participate in the program this year, and half of them have not been "regular" church kids.

Rolling Green

The Little Lambs class has continues to meet at the Rolling Green apartment complex on Thursday mornings. Shelly and Linda continue to be active in the Rolling Green collaborative acting as board chairmen. Also, we continue to be involved with Project 66, a food bank program in Arcadia, providing monthly childcare and transportation for Rolling Green residents to acquire needed food and clothing. The childcare department continues to mentor the staff and families we have from Rolling Green.

VBS During Sunday School

Planned during the Sunday School hour, VBS was another great success for preschool ministry. Our 3-5 year olds were able to have their own worship and praise time in the Stable of Song, and then continue into age appropriate craft, snacks and lessons with their crew leaders. The relationships they had with several of their youth volunteers were an added bonus!

We continued to provide childcare for the Edmond Family Center for Autism support group. This support group meets at our church every second Tuesday of the month. We offer childcare for birth through age 12. This has been a wonderful opportunity for our staff with the addition of supplemental training from experienced therapists in the field of autism. Our regular Sunday morning and Wednesday JAM activities remain strong. We continue to provide morning and evening nurseries for Small Groups, Miriam Circle, Bible Study groups, MOPS and meetings.

We had approximately 4,500 children attend childcare ministry this year!

Shelly Fryer
Associate Director
Childcare/Preschool



Kathy Martin, Chair (6/2012)
Robin Riley, Elder (6/2012)

Members

Amy Mason
Sarah Montgomery
Judy Strahan
Mike Schneider
Chris Martin
Amanda Lashley

Director

Linda Birsner

Assoc. Director for Childcare & Preschool

Shelly Fryer

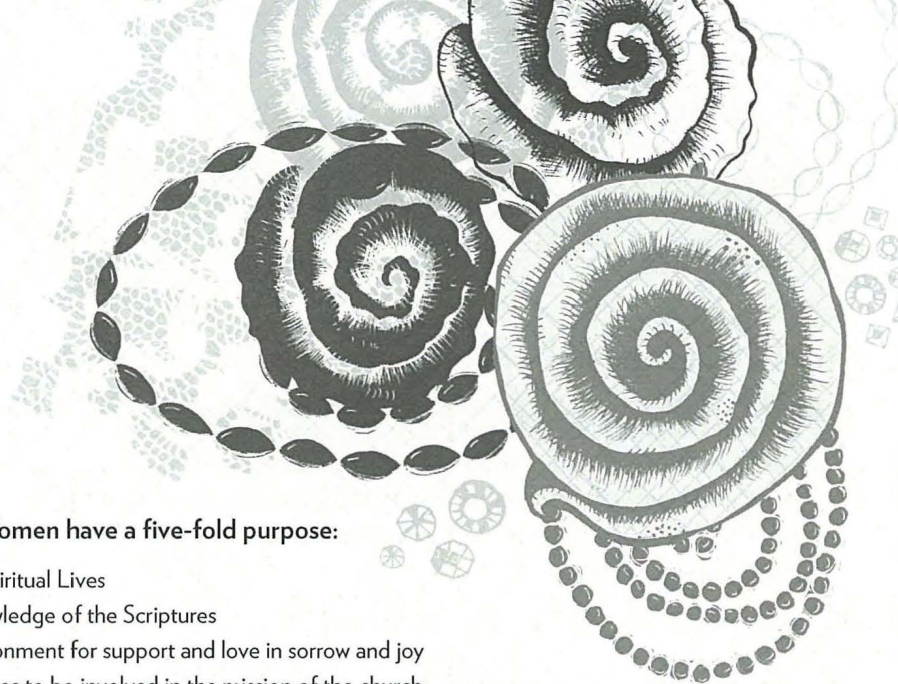
Childcare Program Coordinator

Terrie Jones

Ex Officio

Rev. Matt Jones

Presbyterian Women



PW Women's Council

Co-Moderators

Rose Harper
Cay Wright

Secretary

Leslie Hertzler
Gwen Boots

Treasurer

Gwen Boots

Courtesy Chair

Cay Wright

Scholarships

Libby Cahalan

Baby Baskets

Jean Carroll

Fellowship

Clara Lou Coody

PW Women's Circles

Evening Circle

Denise Bergner, Chair

Martha-Mabel Circle

Letty Ann Schiesz, Chair
Clara Lou Coody

Miriam Circle

Julie Schneider, Chair

Rebekah Circle

Rose Harper, Chair
Pat Sharp

The Presbyterian Women have a five-fold purpose:

1. Enhance our Spiritual Lives
2. Gain more knowledge of the Scriptures
3. Create an environment for support and love in sorrow and joy
4. Commit ourselves to be involved in the mission of the church
5. Enjoy fellowship and prayer together

Four PW Circles meet monthly during the school year.

Evening Circle

Denise Bergner, Chair

Martha-Mabel Circle

Clara Lou Coody and Letty Ann Schiesz, Chair

Miriam Circle

Julie Schneider, Chair

Rebekah Circle

Pat Sharp/Rose Harper, Chair

Mission projects of the of the PW Council & PW Circles:

Local Mission Projects

MOPS, Infant Crisis Center, Edmond Mobile Meals, Breakfast on Boulevard, HOPE Center, Presbyterian Urban Missions, Cooks' Night Out, Wings, Coffee Creek Riding Stables and financial help for individuals in crisis situations.

FPCE Mission Projects

Deacon's Fund, Baby Baskets, Staff Appreciation Event, scholarships, condolence and concern cards and meal preparations for special family needs.

Regional Mission Projects Goodland Home and Pledge to PW in Indian Nations Presbytery.

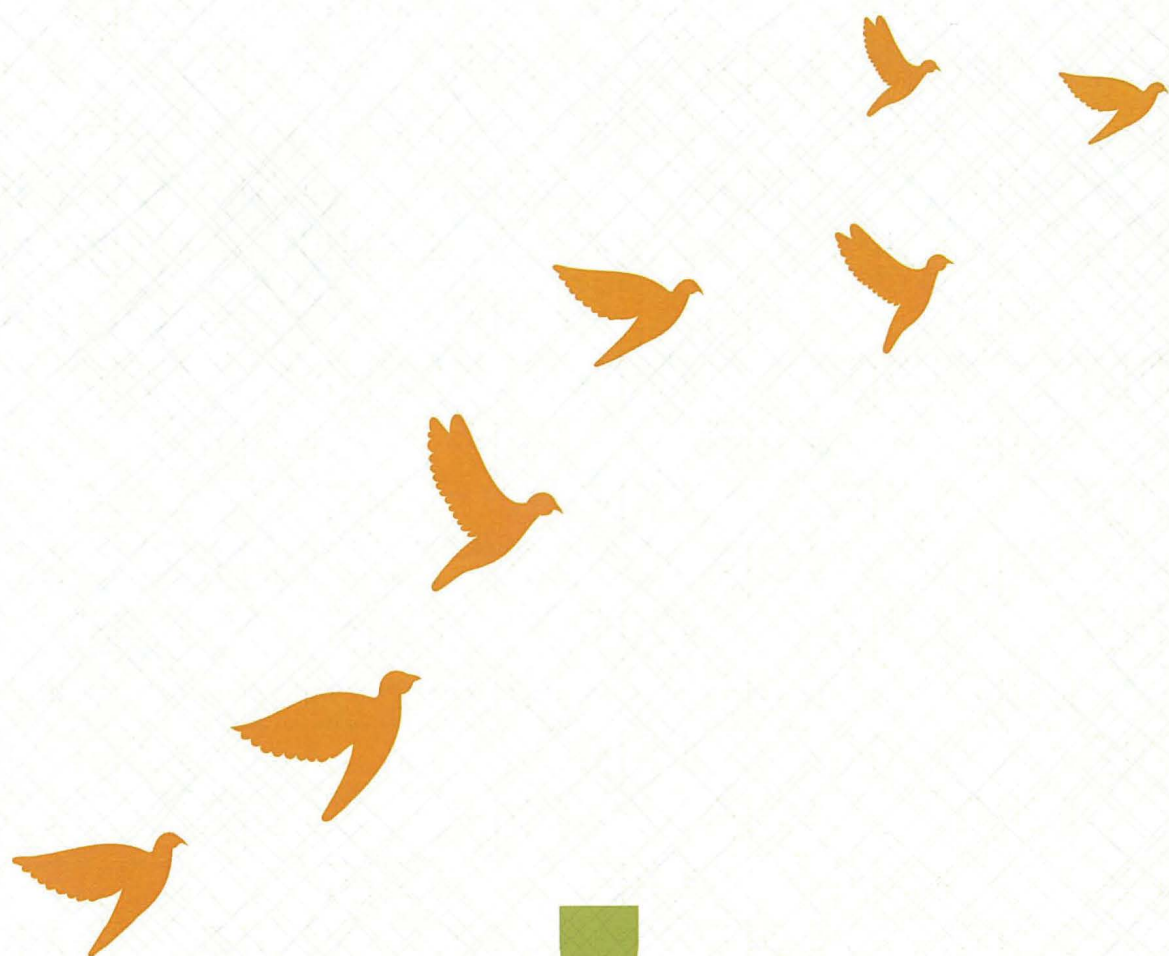
National & International Mission Projects

World Service Blanket Sale, Presbyterian Disaster Relief, Samaritan's Purse, PW Birthday Offering, PW Thank Offering, Fellowship of the Least Coin (an ecumenical women's movement of prayer for peace and reconciliation) and support for missionary families. Each Circle supports a missionary family with Christmas, birthday gifts and financial help.

Income

Each Circle member contributes on a monthly basis during meeting months. An annual Poinsettia sale is held at FPCE. B.C. Clark Jewelers donates a cash commission to PW when Church members make purchases and complete a church coupon. The amount was \$68.92 this year. The PW Council spent \$3,320 plus this year on missions and scholarships. Each of the Circles contribute to its own mission projects in addition to this amount.

Each circle meets on a monthly basis and chooses their individual area of study for the year.



go!

Denominational Relations Committee



Evangelical
Covenant
Order
OF PRESBYTERIANS



Jim Cahalan, Chair/Elder
Wes Fryer, Elder
Dwight Schulke, Secretary

Members

Jim Hartzog
Letty Ann Schiesz
Larry Pulliam
Tom Langdon
Elaine Holt
Don Coody
Charlotte Greaves

Ex Officio

Mateen Ellass

Presbytery Commissioners

Jim Cahalan
Don Coody
Charlotte Greaves
Tom Langdon
Libby Cahalan

The Denominational Relations Committee has traditionally sought to maintain our relations with Indian Nations Presbytery, other churches within the Presbytery and with the Presbytery officers. We have offered assistance to the smaller Presbyterian churches in the Presbytery in whatever ways are appropriate. In addition, the committee has been responsible for monitoring actions and activities within the denomination, and communicating and informing the Session and membership about denominational issues and decisions that will impact our congregation.

2012 has been a year of tremendous activity and change regarding our congregation's relationship to Indian Nations Presbytery and the PCUSA. Over several years our committee (and the congregation) has been concerned over the defacto reduction of Scripture from being authoritative to merely being a guide, a lack of commitment to Jesus Christ as our Savior and Lord and the only way to Salvation, and language in the most recent Book of Order that is universalistic in nature. This finally led to a recommendation in late 2011 from Denominational Relations to the Session that we begin a season of discernment as to whether we should seek to withdraw from the PCUSA.

As this process developed during the year Session Committees were formed to look at whether or not to seek dismissal, to make initial contacts with the Presbytery regarding our request, then to recommend a denomination that we wanted to affiliate with, and finally to negotiate with the Administrative Commission from the Presbytery that had been elected to deal with our request for dismissal. Along the way many documents were produced for the information and edification of the Session as well as the congregation. Members from Denominational Relations played key roles in all of these efforts.*

Denominational Relations has continued to support several of the Renewal organizations in the PC(USA), both with money and with the involvement of committee members who are serving on the Boards of both PFR (Presbyterians for Renewal), Presbyterian Action and the Presbyterian Coalition. Members of the committee attended several national meetings of evangelicals during the year, including three members and two pastors attending a "Fellowship of Presbyterians" gathering in Colorado Springs. In addition the Presbytery Commissioners (plus the pastors) represented our church at the three regularly scheduled and three specially called meetings of Indian Nations Presbytery.

Jim Cahalan
Chair

**This process culminated on January 27th, 2013 with a congregational vote of 815 to 55 to leave the PCUSA and join the Covenant Order of Evangelical Presbyterians (ECO). Indian Nations Presbytery granted our request in a January 28th special called meeting.*

Missions Committee



Robert Menja, Chair/Elder
David Richard, Elder

Members

Janet Sloan
Judy Langdon
Tom Langdon
Eunice Menja
James Belote
Richard Freeman
Sid Brown

Ex Officio

Rev. Matt Jones



During the year 2012, the Missions Committee met monthly on the first Monday of each month at 6 pm. The committee was advised and assisted by Associate Pastor Matt Jones.

The committee notes that our church supported many missions and activities throughout the year. These included a mission trip to Cancun Mexico with a team of five FPCE volunteers and Living Waters for the World helped install a water purification system.

Nineteen volunteers from FPCE and Edmond community spent three weeks of their summer time in Juja Kenya where most kids receiving monthly financial support reside. After a very successful fundraising effort in November and December, a new home called Upendo Children's Home was purchased and about 50 kids will be moving into the new home the early part of 2013. Also, in December, a solar power system was installed in a school run by the Presbyterian Church of East Africa located in Juja. The school currently has about one hundred students and growing. The system has enough capacity to meet the lighting needs of the church as well.

Eighteen volunteers from FPCE and other churches spent a couple weeks in Uganda preaching the gospel, installing a new pastor, commissioning a new church building (built with donations from generous donors in Edmond), running a medical clinic and distributing water filters. Plans are underway in 2013 for the building of medical clinics and a pharmacy in Uganda.

Our congregation continues to support the following local missions: Turning Point Ministries, Brandon Boyd and Campus Crusade for Christ, Hope Center, Kairos, Infant Crisis Center, City Rescue Mission, Presbyterian Urban Mission, Whiz Kids, Goodland Academy, Kevin Ewing - STUMO in India, Breakfast on Boulevard, the Krause family, and the Tappert family.

Robert Menja
Chair

Board of Deacons



The Deacons serve on one of three committees and as a whole provide services, support and encouragement to our congregation and to our community.



Moderator

Holmes Fuller

Vice Moderator

Michele Baker

Secretary

Mary Kaye Foster

Ex officio

Martha Turner

Deacon Committees

Senior Adults & Special Needs

Richard Hammervold (Coordinator)	Judy Gross	Alice Hager
Michele Baker	Mary Kaye Foster	Judy Morrison
Sharon Boecking		

The members of this committee contact all homebound monthly, provide transportation as needed for doctor visits or daily needs and Sunday or church events, pray for all senior adults and those with special needs, provide two team members to serve Homebound Communion with pastors, and provide seasonal baskets to homebound. A highlight is the Tealridge Tea Party and Bible Study and the distribution of flowers on birthdays. This year Touchmark Living Center was added to the bus route for Sunday morning.

Illness/Crisis/Bereavement

David Houck (Coordinator)	Traci Eliot	Janet Kennedy
Jared Looper	Tom Richter	Mark Veazey
Gwen Boots	Dale Shogren	

The members of this committee provide: a family meal or reception after a funeral, pray for families who have experienced a loss, provide a host/hostess for memorial services or funerals, communicate with bereaved through visits, cards, phone calls, minister to family members as needed and provide 6 month and one year follow up with family.

Welcoming & Outreach

Jennifer Postlethwaite (Coordinator)	Tanner Bailey	Nancy Brown
Holmes Fuller	Bill Hainer	Terri McGee
Richard Woodmansee		

Welcoming & Outreach helped to: organize the Christmas gift tree for Grace Living Center 96 presents were distributed for 2012, maintain prayer list of FPCE college students and those serving in military, prepare and mail care packages to college students during finals week, provide greeters at doors services on Sunday and see that a Deacon is assigned to the flower ministry (refurbish flowers left from funerals or weddings and distribute to nursing homes). This team also provides transportation to church and church events. Time and tool needs of our elder members and single mothers are handled by this committee.

Through Spring 2012, the Deacons adopted Central Jr. High by providing money to initiate and support the monthly weekend food in backpacks to students in need. The program was supporting students for the weekend meals. Extra food was distributed to the students to cover the Christmas break. Lisa Edwards, a member of FPCE, is the counselor at Central Jr. High and in charge of the program.

The Deacons also serve as Deacon of the Week where they help count the offering and serve as a greeter on their Sunday. Some Deacons sign up for hospital visitation each month where they visit members in the hospital and in long term care facilities. The Deacon Fund policy is administered by a 6 member committee of Deacons with Martha Turner serving as coordinator.

Martha Turner
CLP

Congregational Care



Congregational Care Coordinator

Martha Turner, CLP

Elder Care

Rachael Boggess, Elder Care Coordinator, worked throughout the year with family members and folks who were referred to her by church members. She has made a strong effort to see as many members as she can on Sunday mornings to make sure all is well.

Parish Nurse

This volunteer staff position is currently open but is expected to be filled in January 2013. Planning is also underway for a volunteer Mental Health coordinator.

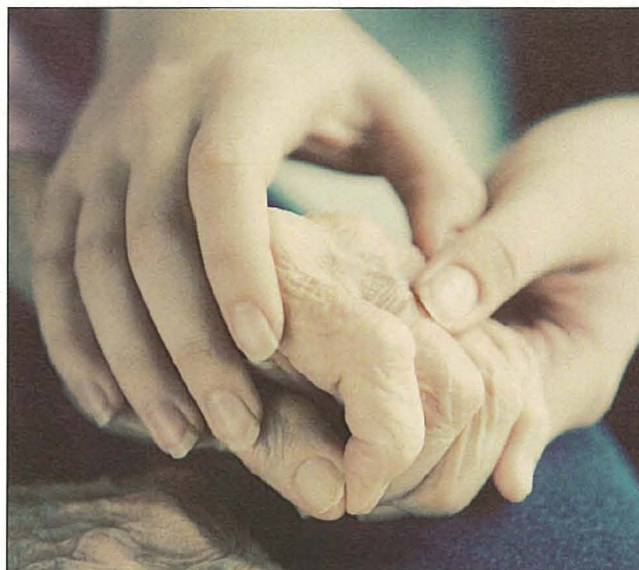
Shelter Ministry

This past year, through Turning Point Ministries, one FPCE single mother staff member has become a homeowner in Legacy Station; one single mother and one single father are leasing a new duplex in Legacy Station. Each homeowner family provides sweat equity to earn their home and construction was provided by many from FPCE's congregation as well as from the community.

A second duplex was built in 2012 and will be occupied in early 2013. Many in the congregation provided financial support and volunteer labor. A fund raising golf event was held in the spring and the Turkey Trot fund raiser was held on Thanksgiving morning.

The Reserves

This group met three times in 2012 for a "State of the Church" update provided by Dr. Ellass. The Reserves are composed of approximately 75 Elders and Deacons who are not actively serving on the Board of Deacons or Session. Members of The Reserves served in various ministry capacities within the life of the church on an "on call" basis.



Prayer Ministry

A weekly prayer request list was e-mailed to members and individual prayer requests were sent throughout the week. The ongoing needs of the congregation/family/friends were prayed for during a weekly worship service attended by the pastors and designated Deacons. (To receive the prayer list by e-mail, contact the church office.)

Family Ministry

This sub-committee, formed in 2012, addresses the spiritual needs of the Christian family. Areas of consideration are Christ centered marriage/family relations, step-parenting; divorce care; widow/widower support; and grandparent's raising grandchildren and singles as a family unit. Sub-Committee Chairperson is Bill Roberts.

Family Ministry members are: Jayne Roberts, Tim & Ruthie Hast, Linda Birsner; Steve & Mona Earnest, Moreen Foster and Martha Turner. Jack Myrick of the Oklahoma Marriage Initiative and Sr. Pastor, Mateen Ellass are consultants to this ministry. The Engaged Couples Mentoring Program, including six trained mentor couples and the FOCCUS evaluation, are an important part of this ministry.

Martha Turner
CLP

Early Childhood Program



Kristin Emerson, Chair

Members

Victor Guarry
Sarita Naegeli
Christina Nihira
Leslie Roubik
Ann Woodmansee

Staff

Mary Singleton,
Director

Ex Officio

Rev. Dale DePue



The Early Childhood Program (ECP) at First Presbyterian Church in Edmond continues to enhance the lives of many individuals and families in the Edmond/Oklahoma City area through the school's mission and vision.

ECP's Mission: to promote the development of each child physically, emotionally, intellectually, socially, and spiritually at the child's own pace, through a developmentally appropriate curriculum.

ECP's Vision: to provide model early childhood programs for the community through educational outreach based on Christian values.

Through the HighScope inspired curriculum, the ECP is continuing to offer children active participatory learning. Active learning means students have direct, hands-on experiences with people, objects, events and ideas. Children's interests and choices are at the heart of our Program.

Dedicated staff planning time is essential and allows for valuable collaboration, ultimately enhancing the overall educational experience for the students.

With surplus and additional raised funds, ECP is consistently able to help acquire and maintain classroom and outdoor equipment. Scholarship funds are available and awarded, as needed.

The ECP Staff, Committee and Parent's Group worked together in 2012 to ensure that ECP needs are identified, discussed and handled appropriately. In 2012, we allocated funds for new computers and on-going staff training.

ECP's summer program, SandCastles, continues to serve families with a flexible summer enrichment alternative.

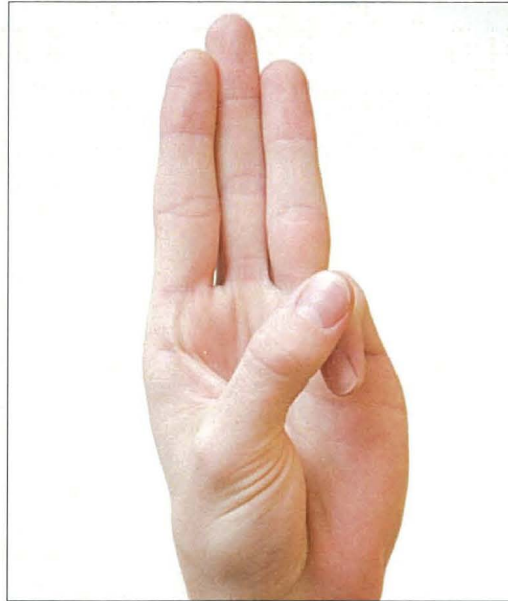
The First Presbyterian ECP employs and supports approximately 30 educators who have a love for God and share that love with approximately 200 children, currently enrolled, from 1 year of age to 6 years of age. The majority of our teachers hold a college degree, most in the areas of Early Childhood Education or Elementary Education.

We are so blessed to be a part of God's work through this wonderful outreach, touching the lives of many beautiful children and their families!

Kristin Emerson
Chair

Mary Singleton
Director

Boy Scouts of America Troop 78



Troop 78 has completed its 81st year of service to the church and the community this year, being chartered by the First Presbyterian Church of Edmond in 1931. The Troop has once again earned the Quality Unit Award and the National Camping Award.

Dr. Dallas New took over as Scoutmaster in December upon the retirement of Dorman Morsman. Mr. Morsman will continue to be actively involved with the troop. David Bailey continued as Troop Committee Chairman and Robert Reid began serving as the Chartered Organization Representative, having taken over from Chris Martin.

2012 began with Denver Brackett serving as Senior Patrol Leader. Drew Harris took over in February and served as Senior Patrol Leader until September when he turned over the reins to Sam Wood who serves now in that capacity.

Our troop recruited 11 new members in 2012 and we ended the year with 68 youth and 91 registered adults. Our monthly programs included at least one outdoor activity per month and regular meetings on Monday evenings. In addition to campouts throughout Oklahoma, the troop again participated in an annual favorite, the Trappers Rendezvous in Newton KS.

Eleven scouts earned their Eagle Scout rank in Troop 78 this past year: Nate Moseley, Jake Gully, Drew Harris, Dalton Sachleben, Coley Lee, Adrian Phua, Ben Russell, Thomas New, Jonathan Miller, Ryan McCormick and Jonah Moore. This makes well over 350 youth that have earned their Eagle rank with Troop 78 since 1931.

Also in 2012, Robert Reid was awarded the Celtic Cross award for his many years of devoted service to the BSA and the youth of this church.

Thank you for your support in 2012 and we are looking forward to a fun and successful 2013!

NOTES



A large rectangular area with a dashed border, containing 15 horizontal lines for writing notes. The lines are evenly spaced and extend across the width of the dashed box. The background of the page features faint, stylized illustrations of green plants and leaves, particularly visible on the left and bottom edges.



FIRST PRESBYTERIAN
CHURCH OF EDMOND

1001 South Rankin Street
Edmond, Oklahoma 73034