

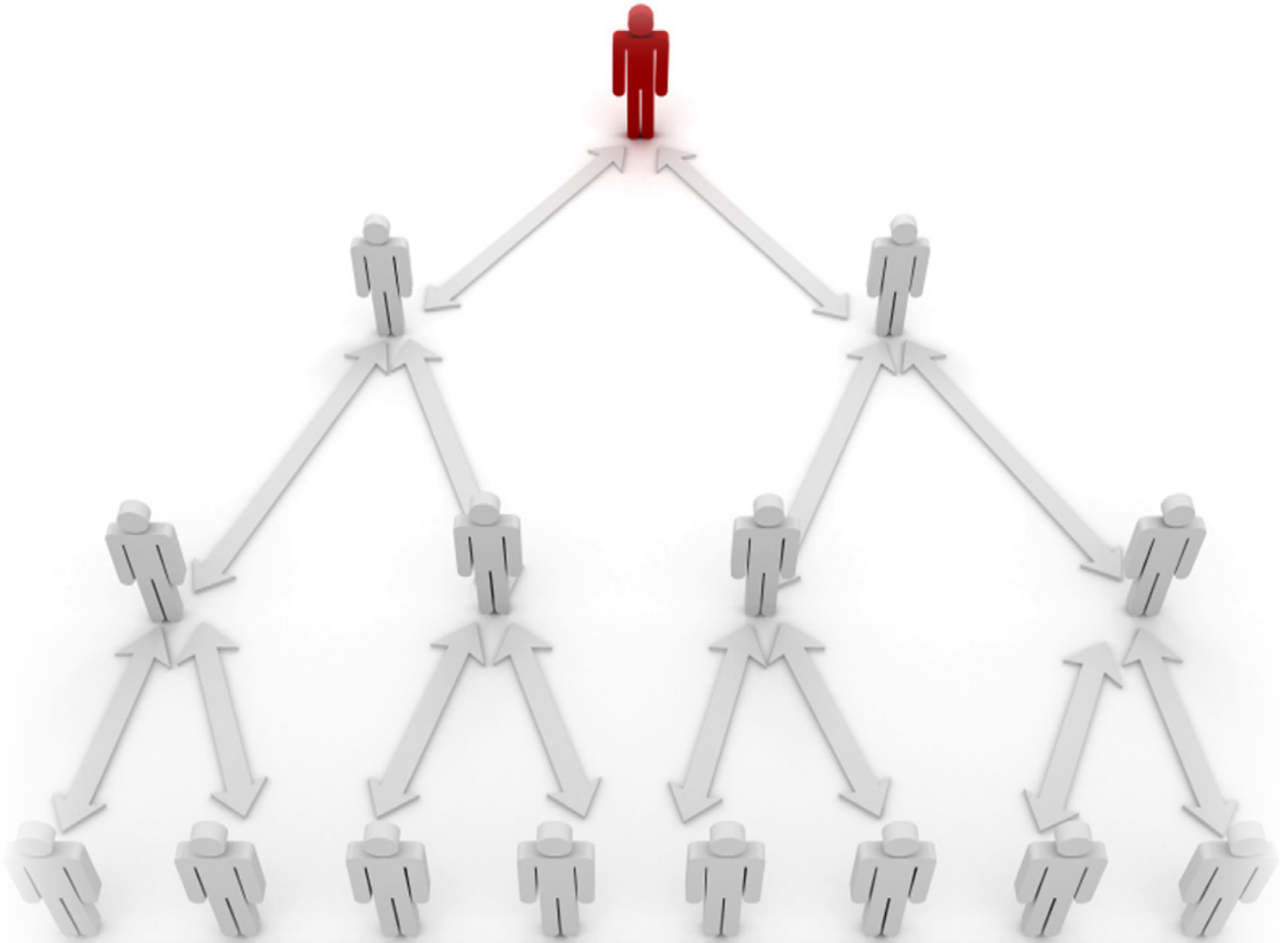


E~~X~~PONENTIAL DISCIPLES

2013 ANNUAL REPORT
First Presbyterian Church of Edmond, Oklahoma

EXPONENTIAL DISCIPLESHIP.

Being Disciples. **Making Disciples.**



**FIRST PRESBYTERIAN
CHURCH OF EDMOND**

being disciples...making disciples!

1001 South Rankin Street | Edmond, Oklahoma 73034
405.341.3602 (phone) | 405.341.5248 (fax) | www.fpcedmond.org



TABLE OF CONTENTS

1 EXPONENTIAL CHURCH

- Message from Mateen **1**
- Session Members & Diaconate **2**
- Our Staff **3**
- Church Membership **4**
- Communications **5**
- Worship **7**
- Evangelism & Assimilation **8**
- Music Ministries **9**
- Personnel Committee **10**
- Denominational Relations **11**

2 EXPONENTIAL GIVING

- Finance & Property **12**
- Treasurer's Report **13**
- Income & Expenses **14**

3 EXPONENTIAL DISCIPLESHIP

- Adult Discipleship **15**
- Christian Connections **17**
- Kids' Ministries **18**
- Student Ministries **19**
- Missions **21**
- Congregational Care **22**
- Board of Deacons **23**
- Early Childhood Program **24**
- Boy Scouts/Troop 78 **25**

EXPONENTIALLY SPEAKING



Rev. Dr. Mateen Ellass, Senior Pastor

Message from Mateen

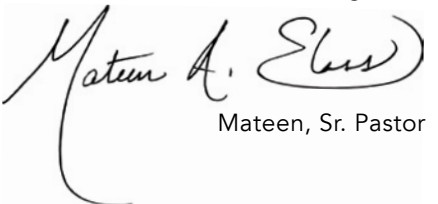
Last year, our elders summed up the ongoing mission of our church with the words “Gather, Grow, Go,” reminding us of the threefold nature of our calling – to glorify God together in worship, to mature in our life with Christ as disciples, and to take the gospel of salvation to a lost world. As we seek to become a congregation flourishing in the grace of God, we have discovered that the key this threefold dance of worship, discipleship and evangelism lies in the nurture of disciples.

THIS YEAR, WE ARE TALKING OF EXPONENTIAL DISCIPLESHIP, THE KIND OF COMMITMENT TO CHRIST THAT CAUSES OUR GROWTH INTO HIS LIKENESS TO ABOUND, OUR WORSHIP TO FLOW FROM HEARTS FILLED WITH GREATER GRATITUDE AND DEVOTION, AND OUR EVANGELISM TO BE POWERED BY HIS COMPASSION AND LOVE.

Exponential Disciples are eager to lay other lesser priorities aside to walk with Jesus, willing to commit their resources in larger measure to His Kingdom goals, passionate about introducing others to the soul's True Enchanter. This year you will hear our leaders talking relentlessly about the path of exponential discipleship, where those who have given everything for Jesus are in turn inspiring by their lives and conversations new disciples who in turn are giving their everything for Jesus, who in turn are doing the same among their friends and associates, and so on. Exponential discipleship in maturity leads to exponential discipleship in the spread of the gospel!

We all have much room to grow and mature in Christ. My prayer, for myself and our congregation, is that God will paint before our eyes such a glorious vision of His future that we will gladly deny ourselves, take up our crosses and follow Jesus. May 2014 be the year we look back on and say, “We became exponential disciples then, as we surrendered ourselves to God’s unfailing grace!”

Yours on the road together,


Mateen, Sr. Pastor

Session Members

Class of 2013

Kristin Emerson
Nancy Foringer
Andy Fugitt
Bob Laundhardt
Kathy Martin
Jeff Oakes
Don Schiesz

Class of 2014

Jeannie Bath
Jim Cahalan
Georgia Fiering
Laura Ganz
Brian Horner
Robert Menja
Veta Roberts

Class of 2015

Harry Birdwell
Wes Fryer
Ruthie Hast
Terry Attebery
Mark Moore
David Richard
Robin Riley

Class of 2016

David Dude
Tom Langdon
Ken Rees
Bill Roberts
Don Schiesz
Sheri Stickley
Geary Walke

Ministers

Rev. Mateen Ellass
Rev. Matt Jones
Rev. Dale DePue

Congregational Care

Martha Turner, CLP

Clerk of Session

Libby Cahalan

Diaconate

Class of 2013

Mary Kaye Foster
Cheri Fuller
Alice Hager
Richard Hammervold
Jared Looper
Jennifer Postlethwaite
Tom Richter

Class of 2014

Michele Baker
Traci Eliot
Judy Gross
David Houck
Janet Kennedy
Dale Shogren
Sharon Pace
Mark Veazey

Class of 2015

Sharon Boecking
Gwen Boots
Nancy Brown
Bill Hainer
Carol Lamb
Terri McGee
Judy Morrison
Richard Woodmansee

Class of 2016

Marsha Bath
Cheri Blackwood
Kenny Brown
Kristen Davis
Amy Mason
Eunice Menja
Dwight Schulke
Gina Sloniker

One Year Deacons

Kendall Ellass
Asher Martel

Moderator

Michele Baker

Vice Moderator

Gwen Boots

Secretary

Bill Hainer

Ex Officio

Martha Turner, CLP

OUR STAFF

Pastoral Staff

Rev. Dr. Mateen Ellass	Senior Pastor
Rev. Matt Jones	Associate Pastor
Rev. Dale DePue	Pastoral Assistant
Martha Turner	Congregational Care Coordinator
Sheila Cahlik	Administrative Assistant to Sr. Pastor
Debbie Whorton	Receptionist/Administrative Asst. to Associate Pastor

Business Office

Jim Booher	Director, Finance & Human Resources
Tracey Rice	Financial Assistant

Music & Worship

Jim VanHemert	Minister of Music (retired 12/31/13)
Ben Meek	Director, Contemporary Worship & Music
Terry Attebery	Director, Contemporary Choir
Margaret Eaton	Organist
Denise Bergner	Wedding Coordinator

Communications

Zena Nipper	Print Media Coordinator
Bill Crouch	Audio/Visual Coordinator
Melissa Tisdell	Internet Technology Coordinator
Tom Boles	Sound Engineer

Kids' Ministries

Linda Birsner	Director, Kids' Ministries
Lauren Matthes	Associate Director, Childcare/Preschool
Terrie Jones	Program Coordinator, Childcare
Kerrie McLish	Coordinator, Kids' Ministries

Early Childhood Program

Mary Singleton	Director of Early Childhood Program
Debbie Frantz	Administrative Assistant, Early Childhood Program

Student Ministries

Brian Wagner	Director, Emerging Generation & Comm. Response
Rachelle Robinson	Associate Director, High School
Wade McKenna	Associate Director, Middle School
Christy Ford	Program Coordinator, Student Ministries

Facilities

Marvin Houston	Director, Facilities
Cloy Netherton	Scheduling/Head Custodian
Jim Pennington	Building Superintendent
Esmeralda Davila	Custodian
Bill Thoele	Custodian

OUR MEMBERS

New Members & Reinstated or Restored Members in 2013

Alicia Aguilar	Joann Graham	Charles Oliver
Albert Appiah	Marilyn Hanska	Drew Rhodes
Joana Appiah	Ron Hanska	Lisa Rhodes
Bill Ball	Libby Holshouser	Julie Schmidt
Uni Ball	Louis Holshouser	Lee Schmidt
Dave Bash, Jr.	Diane Horne	Michelle Taylor
Anthony DeBenedictis	Charity Karaya	Bill Thoele
Cindy DeBenedictis	Charles Karaya	Josh Thompson
Tom Boles	Steve McKeever	Sharon Thompson
Taelor Connell	Glenda McKeever	Anita Nankoh Toh
Alex Corp	Elaine Mercer	Jean Wellfare
Collin Corp	Ron Mercer	Kevin Wellfare
David Forbat	Nino Misuraca	Randy Woods
Hannah Forbat	Kelly Misuraca	Celine Toh*
Luke Forbat	Chuck Morgan	*Affiliate Member
Sue Ann Forbat	Andrew Nye	
Greg Graham	Heather Nye	

Confirmation Class of 2013

Audrey Beckman	Jeffrey Javaheri	Zane Pedersen
Emily Beckman	Haylee Klima	Grace Perkins
Mary Bishop	Abel Kwendi	Allie Reddout
Andrew Bixby	Stewart Landes	Maren Ryan
Madeline Davis	Keegan Loberg	Grace Rykard
Joshua Earnest	Austin Martin	Cooper Stanley
Emily Galliart	Madeline Minnix	
Olivia Guyer	Levin Moore	
Hannah Hartzog	Avery Nikkel	

Deaths in the Year 2013

Kay Rogers February 27, 2013	Della Pearson October 1, 2013	Gladys Eberline December 13, 2013
Sharon Cubberly June 5, 2013	Don Bown November 17, 2013	
Ruth Jean Reining August 18, 2013	Dr. Oliver Moles December 7, 2013	

Member Stats

Active Members

December 31, 2012

1,405

+

2013 Profession & Reaffirmation of Faith

40

2013 Letters of Transfer

23

Other Gains

13

Total Gains: 76

—

Letters of Transfer

17

Deaths

7

Other

48

Total Losses: 72

=

1,409

Active Members

As of
December 31, 2013

EXPONENTIAL COMMUNICATIONS

Are we there yet?

In the year 2013 we welcomed new, exciting and necessary additions to the department in the areas of video, Internet Technology (IT) and advertisement. Even still the FPCE Communications Department managed to stay under the given annual budget of \$85,000 and final expenditures for the year totaled \$83,366. Although a large part of the budget was allotted and used for in-house printing, it has still proven to be a more economical means of production than out-sourcing. There were publications that required the use of an outside source but for the most part everything was designed and produced in-house. The Communications print budget continues to absorb the expenses of the printers/copiers throughout the church which are utilized by ministries, church members and staff. The IT area of this department continues to maintain and improve the FPCE computer system by keeping the network healthy and by providing excellent on-site support to the church staff, members, and visitors.

While we have made great strides, we still have to ask the question, "Are we there yet?"

Looking to the future, we would like to see more moves towards getting us "there," such as on-line giving and a new website that is "responsive" to hand-held devices. In order to increase discipleship "exponentially" we will need to have the means necessary to reach future generations and we will need to continue to grow alongside the technology and media that is such a vital part of communication in the world today.

Accomplishments in 2013

Audio/Visual Communications

The use of video technology continues to grow and enhance the FPCE worship experience and build a strong presence within the church and on the web and electronically through vimeo, enews and the church website: fpcedmond.org

A \$12,000 budget was used to create and maintain:

- » Updated video production studio with a sound booth, professional portable sound recording device
- » Over 30 videos were produced in-house for multiple ministries.
- » Digital Media Signage maintained and updated
- » AV in facility updated and maintained
- » Planning Center Online (used to organize and stream line worship planning)
- » Photos of baptisms, Rolling Green, Upendo Kids (to name a few)
- » 2013 also saw the addition of a new high definition projector in the sanctuary. and has allowed us to fully show the glory of God's Kingdom through videos.

We are excited about the year to come and would like to share the vision:

Create a church-wide broadcast network, by putting new monitors in every classroom and adding additional video equipment to our resources, which would allow us to:

- » Utilize the network to broadcast live streams of video from the sanctuary or anywhere in the church, on Sunday mornings or at any time during a service or event as needed.
- » Each morning, 10 minutes before study groups start, there would be a message from the pastors, a testimony, brief promos of upcoming events and prayer. This would be an in-house production.



Print Media Coordinator

Zena Nipper

Audio/Visual Coordinator

Bill Crouch

IT Support Coordinator

Melissa Tisdell

Sound Engineer

Tom Boles

Ministry Partners

Bob Brown, Visual Technician

Tom Humes, Visual Technician

Ex Officio

Rev. Matt Jones



Print/Web/PR

- » Design, publication and production of the FIRST LOOK quarterly Events & Visitor Guide, in-house ministry brochures and other annual/seasonal publications such as the 2013 Advent Booklet or Annual Report
- » Publication and distribution of the weekly worship bulletin and the weekly FPCE enews
- » Development/maintenance of the FPCE facebook page; creation & promotion of church-sponsored facebook events held in 2013
- » Increased presence of the church and its ministries in the community via print and/or web utilizing various media outlets such as OPUBCO, Edmond Life & Leisure, Edmond Sun, Edmond Outlook and MetroFamily magazine
- » Creation & production of the artwork and publicity for special services and events such as 36 Sunday, Advent, Easter, Thanksgiving, Annual Chili Cook-off, Christmas Cookie Walk, Women's Forum, Bible Studies, etc.
- » Maintenance and continued development of the FPCE website: fpcedmond.org; addition of a stronger presence of in-house video to the web (primarily video produced in-house by AV Coordinator, Bill Crouch)
- » Marketing & Advertisement for the "Images of Christmas" Musical Presentation held in December 2013
- » Conceptual development and creative support for Sunday worship, sermon series, committees, pastoral staff, missions (internal and external) and FPCE ministries
- » Design & production of signage, slides, posters and indoor/outdoor banners used for all-church events and ministry promotions
- » Coordination & production of print materials for church mailings and stewardship campaigns

EXPONENTIAL WORSHIP



Worship Committee

Ruthie Hast, Chair/Elder
Veta Roberts, Elder

Members

Terry Attebery
Ben Meek
Letty Ann Schiesz
Mike Sharp
Mark Veazey

Ex Officio

Rev. Mateen Ellass

The Worship Committee works in conjunction with the pastors and music staff in the planning and implementation of the weekly worship service, as well as other worship services throughout the year.

2013 was a busy year for the committee. After much prayer, inquiry, and discussion by the committee and the Session, we returned to two separate worship services in September with the beginning of the new school year.

The first service is a traditional worship, and the second service is a contemporary style. A longer break between Sunday school and the second service allows more time for fellowship with those we may not regularly see on Sunday mornings.

HIGHLIGHTS OF 2013

- » **FESTIVAL OF FAITH** WAS HELD ON FEBRUARY 8-10, 2013
- » **NAME CHANGE** FROM THE "HEALING AND WHOLENESS SERVICE" TO "RENEWAL WORSHIP SERVICE"
- » **ADDITION OF 2 SUBCOMMITTEES:** SANCTUARY PREPARATION TEAM (LED BY LETTY ANN SCHIESZ) AND WORSHIP SERVICE PRAYER TEAM (LED BY MARK VEAZEY)
- » **PUBLICATION OF THE ADVENT BOOKLET** WRITTEN & EDITED BY MEMBERS OF THE CONGREGATION
- » **RETIREMENT OF JIM VANHEMERT** AND A PARTY IN HIS HONOR FOLLOWING THE CHOIR'S "IMAGES OF CHRISTMAS" MUSICAL PRESENTATION IN DECEMBER 2013.

Along with all the changes, the committee has continued to carry out the regular responsibilities of preparation and service of monthly communion, ushers at regular and special worship times and weekly chancel prayer partners.

Ruthie Hast
Chair

EXPONENTIAL EVANGELISM



Evangelism & Assimilation

ACCOMPLISHMENTS IN 2013

- » **3G SUNDAY** PROMOTED MINISTRIES OF FIRST PRES, INVITING MEMBERS TO GATHER, GROW AND GO.
- » **THE ALPHA CLASS** TAUGHT CHRISTIAN BASICS TO SEEKERS THIS FALL, IN A HOME WITH HOME-COOKED MEALS.
- » **COOKS' NIGHT OUT SERVED OVER 2,000 MEALS** THIS YEAR, AVERAGING 169 MEALS EVERY 2ND FRIDAY OF THE MONTH.
- » **FESTIVAL OF FAITH*** REVIVED, EXERCISED, AND CHALLENGED OUR FAITH
- » **FIRST LUNCH AT FIRST PRES** SHARED A CASUAL LUNCH FOR VISITORS AND PASTORS EACH QUARTER.
- » **NEW MEMBERS CLASSES** TRANSFORMED THREE GROUPS OF VISITORS INTO ACTIVE CHURCH MEMBERS.
- » **ROLLING GREEN APARTMENT MINISTRIES** SHARED HOT DOGS, FELLOWSHIP AND FUN WITH A LOCAL APARTMENT COMPLEX THROUGHOUT THE SUMMER.
- » **TIGER CLUB** BROUGHT MIDDLE SCHOOL STUDENTS IN TO STUDY, PLAY AND LEARN THAT GOD LOVES THEM.
- » **WELCOMING BOOTH*** GREETED NEW VISITORS WITH INFORMATION, SMILES AND A GOODY BAG (WELCOME BAGS TAKEN TO VISITORS WHO MISSED THE BOOTH) AND YELLOW CARDS WELCOMED NEW VISITORS EACH MONTH.

Jeannie Bath

Chair

*first time, or first time in many years

Evangelism & Assimilation Committee

Jeannie Bath, Chair/Elder
David Dude, Elder
Tom Langdon, Elder

Members

Kenny Brown
Diane Brown
Crystal McGee DePue
Judy Gross
Charlotte Greaves
Stephani Nichols

Ex Officio

Rev. Dale DePue

EXPONENTIAL MUSIC



Jim VanHemert, Director (thru 12/31/13)

Chancel Bells

Directed by Terry Attebery

Combined Choir

Directed by Jim VanHemert
and Terry Attebery

JuBELLation

Directed by Jim VanHemert

Kids' Handbells

Directed by Jim VanHemert

Sanctuary Choir

Directed by Jim VanHemert

True North

Directed by Ben Meek

A Heartfelt Message

Normally this report would be centered on reviewing what happened in the Ministry of Music during 2013. The report would include the experiences of those who sing or ring handbells or play instruments. The First Presbyterian Church of Edmond was blessed with, Sunday by Sunday, musical offerings as well as special musical presentations during the course of the year. However this year I would like to use this forum to thank you and say good-bye – at least as your Minister of Music.

It has been my privilege to serve five churches in a full-time capacity. It was my privilege to have served this church twice – first as a part time Director of Music and second as a full-time Minister of Music. Each of the churches who have allowed me to serve have been wonderful and unique but for me, God saved the best for last. Few people get the opportunities that you have not only allowed but supported and appreciated. I don't say "the best" casually. I say it because it is true.

YOU AS A CONGREGATION HAVE BEEN:

- » SUPPORTIVE AT EVERY TURN
- » FORGIVING WHEN PLANS DID NOT TURN OUT WELL OR AS PLANNED
- » EFFUSIVE WITH YOUR WORDS OF ENCOURAGEMENT... AS DEMONSTRATED BY OVER 6.5 INCHES OF YELLOW CARDS AND 2 LARGE FILES OF LETTERS, CARDS AND NOTES
- » READY TO HELP IN ANY WAY NEEDED OR POSSIBLE & WHENEVER ASKED, GENEROUS WITH COMPENSATION AND BENEFITS
- » LOVING THROUGH THE MOST DIFFICULT TIME PARENTS CAN EXPERIENCE
- » LIMITED WITH YOUR CRITICISM

No one could, or should, ask for more. I'm just very thankful to have been the recipient. Without reservation, I can say that I can't wait to see what God has in store for our church in general and specifically with the Ministry of Music. It is my hope that the words in the first stanza of "Crown Him With Many Crowns" has been true at every turn:

**HARK! HOW THE HEAVENLY ANTHEM DROWNS
ALL MUSIC BUT ITS OWN.**

Jim VanHemert

Minister of Music thru 12/31/13

PERSONNEL COMMITTEE

Personnel Committee

The purpose of the Personnel Committee is to assist the Session in meeting its responsibilities for the overall health and ministry of the church. In this regard, the Personnel Committee serves in an advisory capacity providing support and guidance to church staff members and committee chairpersons in the areas of recruiting, hiring, compensation, benefits, employee relations, personnel policy formulation and performance management.

Personnel Committee's Activity During the year 2013:

- 1 **ASSISTED IN THE TRANSITION FROM:**
PCUSA TO ECO, WHICH INCLUDED UPDATING OR REVISING SPECIFIC PERSONNEL POLICIES AND BENEFITS IN ORDER TO BE IN COMPLIANCE WITH ECO REQUIREMENTS.
- 2 **REVISED PERSONNEL POLICIES TO:**
ADDRESS DEVELOPING NEEDS AND/OR BE IN COMPLIANCE WITH FEDERAL OR STATE LAWS.
- 3 **DEVELOPED & APPROVED:**
JOB DESCRIPTIONS AND/OR COMPENSATION PACKAGES FOR: PARISH NURSE, ASSISTANT PASTOR FOR LIAISON AND TEACHING, MEDIA COORDINATOR, DIRECTOR OF EMERGING GENERATION & COMMUNITY RESPONSE, DIRECTOR OF MUSIC & WORSHIP ARTS AND FOR THE ASSOCIATE PASTOR OF ASSIMILATION, DISCIPLESHIP & SPIRITUAL GROWTH.
- 4 **REVISED THE ORGANIZATION CHART:**
TO REFLECT PENDING STAFF CHANGES AS RESULT OF RETIREMENTS AND PENDING ADDITIONS TO STAFF.



Personnel Committee

Don Schiesz, Chair/Elder
Harry Birdwell, Elder

Members

Ron Bath
Ann Hawkins
Keith Montgomery
Linda Veazey

Ex Officio

Rev. Mateen Ellass

Don Schiesz
Chair

DENOMINATIONAL RELATIONS



Denominational Relations Committee

Jim Cahalan, Chair/Elder
Wes Fryer, Elder

Members

Jim Hartzog
Don Coody
Bob Launhardt

Presbytery Commissioners

Jim Cahalan
Wes Fryer
Dwight Schulke
Libby Cahalan

Ex Officio

Mateen Ellass

This has been a year of transition for the Denominational Relations Committee. Traditionally the assignment of that committee was to maintain relations with Indian Nations Presbytery (PCUSA), as well as other churches within the Presbytery. That all changed on January 27th, 2013 when our congregation voted 815-55 to leave the PCUSA and join the Covenant Order of Evangelical Presbyterians (ECO). Indian Nations Presbytery confirmed that decision and released our church at a special called meeting on January 28th, 2013.

Those votes were the culmination of several years of hard work by the members of Denominational Relations, along with many others. Since then we have continued to monitor developments in the other Presbyterian Denominations, but our primary interest has been in the growth and development of ECO in general, and The Presbytery of the West (ECO) in particular. Our church was the eighth member of our new Presbytery. That number has grown to over 60 churches by the end of 2013, and the original Presbytery of the West has been split into four different Presbyteries to accommodate that growth.

Members of the committee (along with the pastors) have served as commissioners to the two scheduled Presbytery meetings (held via conference call) that occurred during 2013. During 2014 we will represent our church at the Synod Assembly (equivalent to the PCUSA General Assembly) scheduled to be held in Dallas in August.

During the year our committee developed a revised By-Laws document for our church to conform with the changes resulting from the change in Denomination. The Session adopted the new document. The committee's primary activity at this point is to encourage the development of Missional Affinity Groups between our church's Session and pastors and Sessions from similar sized churches in our new Presbytery. The idea of similar churches working together to encourage one another and share ideas in Missional activity is one of the major tenants of ECO. Our committee will be attempting to arrange a meeting of similar sized churches in our Presbytery in connection with the Synod meeting in Dallas in August, to discuss Mission Affinity Groups and how we might be working together to form such a group.

Denominational Relations has continued to support several of the Renewal organizations serving the Presbyterian Denominations, both with money and the involvement of committee members who are serving on the Boards of both Presbyterian Action and Presbyterians Pro Life.

Jim Cahalan

Chair

EXPONENTIAL GIVING

AS WE LOOK FORWARD TO 2014,
WE RECALL **2 CORINTHIANS 9:7-8**

"Each man should give what he
has decided in his heart to give,
not reluctantly or under compulsion,
for God loves a cheerful giver."



Finance & Property Committee

Georgia Fiering, Chair
Mark Moore, Elder

Treasurer

Rick Roberts

Members

Steve Kinney
Gary Moore
David Timberlake
Bob Turner

Staff

Jim Booher, Finance
Marvin Houston, Property

Ex Officio

Mateen Ellass, Senior Pastor

The mission of the Finance and Property Committee is to provide oversight of the management of the church's financial resources and oversee the management and maintenance of all church property.

In 2013, the Finance and Property Committee accomplished the refinancing of our mortgages which now provides for reduced loan and interest payments. The financial burden was also eased somewhat by our affiliation with ECO, the Evangelical Covenant Order of Presbyterians, due to ECO's reduced affiliation cost. At the end of 2013, the mortgage balance was \$2,565,276 and the balance of the Separation Agreement was \$373,213, which make a combined obligation of \$2,939,489.

Also in 2013, a Safety and Security Sub-Committee was established in order to assure proper policies and procedures are in place in the event of an emergency. 2014's goals are to address a comprehensive plan for security volunteer training and a long-range plan for Sanctuary audio/visual equipment as well as a future campus landscape plan.

The finance mission of this committee continued to work smoothly with the very capable church staff. The staff was conscientious regarding their budgets and effectively managed their funds for 2013.

We express gratitude to Jim Booher for his many capable years of service, clean audits and monthly preparations for each committee and Session meetings.

Georgia Fiering

Chair

EXPONENTIAL GIVING



The year 2013 TREASURER'S REPORT

While in many respects 2013 was a wonderful year for ministry at FPCE, as we began our life in a new denomination (ECO), financial giving to our operating fund decreased by 6.5% from 2012. Our income totaled \$2,181,516 while our operating expenses came to \$2,278,692, leaving us with a year-end deficit of \$97,176.

This decrease in general giving was, on the other hand, offset by extra generosity in paying down our capital debt. Contributions to Stone by Stone IV totaled \$824,752 for 2013 (compared to \$364,806 in 2012!). Of that, \$715,138 went to reduce our principal and \$109,614 covered interest on the loan. As of the end of 2013, our total mortgage loan for all our properties has been reduced to \$2,565,276. This year in May, we will kick off our final capital campaign to retire all our remaining debt. It will be named "Capstone," indicating our intention to free ourselves from further campaigns or encumbrances so we may give one hundred percent of our funds to ministry and mission work. When the time comes, we hope you will pledge generously toward this goal!

During last year the public accounting firm of Bell and Rhodes performed an audit of the financial statements of FPCE in accordance with Generally Accepted Accounting Standards as of December 31, 2012. We received a "clean" audit opinion and there were no negative findings as a result of their audit.

As we move into this new year, we will see our financial support move us forward into exponential discipleship, with continued blessing and growth serving the our community, the larger world, and our own membership as well.

Thank you for your continued generosity to the work of the Lord!

Rick Roberts

Treasurer

2013 INCOME & EXPENSES

Income

	Annual Budget	Actual Amounts
Pledged Receipts	\$1,850,000	\$1,584,036
Non-Pledged Identifiable	418,500	559,274
Prior Year Pledges	6,000	6,000
Loose Offering	16,000	12,391
Building Usage	8,800	16,971
Interest Earned	50	38
Other Income	650	2,806
Total Income:	<u>\$2,300,000</u>	<u>\$2,181,516</u>

Expenses

Denominational Relations	45,150	36,563
Missions	120,000	120,264
Music/Worship	25,485	20,082
Children's Ministry	26,000	27,033
Youth Ministry	26,000	19,592
Adult Ministry	3,930	2,509
Evangelism/Assimilation	3,100	1,336
Communications	85,000	83,366
Christian Connections	7,660	2,656
Congregational Care	2,675	647
Program Administration	1,616,775	1,606,842
Facilities and Support	338,225	357,802
Total Expense:	<u>\$2,300,000</u>	<u>\$2,278,692</u>

Increase / Decrease In Cash: -97,176

EXPONENTIAL DISCIPLESHIP

Adult Discipleship Committee

Ken Rees, Chair/Elder
Sheri Stickley, Co-Chair/Elder

Members

Don Boyd
Diane Brown
Dan Martel
Krista Moschak
Marcia Peeler
Dick Sternloff
Karl Stickley

Ministry Partner

Carol Harrison,
Library & Gifts Class

Pastoral Liaison

Rev. Dale DePue

Adult Discipleship

THE ADULT DISCIPLESHIP COMMITTEE SEEKS TO PROVIDE ALL ADULTS IN OUR CONGREGATION A RICH VARIETY OF OPPORTUNITIES TO LEARN CHRISTIAN FAITH AND PRACTICE IN RELATIONAL GROUP SETTINGS WHICH PREPARE AND GUIDE THEM TO BECOME FULLY ENGAGED DISCIPLES:

MAKING DISCIPLES FOR JESUS CHRIST.

Events & Opportunities offered in 2013:

ADULT SUNDAY SCHOOL: A variety of study groups were offered throughout the year with topics covering both scriptural study and Christian life application. Average attendance was 192, which represented about a third of those attending Sunday morning worship services. Study groups were promoted through the website, TV monitors, the "First Look" guide, and a brochure for each quarter's adult study opportunities. The committee is discussing ideas to increase future attendance.

WOMEN'S MINISTRIES: The Fall Kickoff, featuring "The Good, Bad & Beautiful Women of the Bible," attracted about 150 women and offered both fellowship and opportunity to sign up for a Circle, Bible Study, and/or volunteer opportunities. The Circles welcomed new members; Women's Bible Study had approximately 100 women study "Nehemiah;" and, the annual Poinsettia Sale raised \$900, to be disbursed equally to Cook's Night Out, Deacons' Fund, and Edmond Mobile Meals. The Women's Bible Study group did a Fall Mission Project with the "Kids Against Hunger" organization. Additionally, plans got underway to more actively involve the next generation of FPCE women.

MEN'S MINISTRIES: The ongoing activities of the FPCE men's ministry include Friday Morning Men's Group, numerous Bible studies at various locations and days and an annual trip to the men's conference at MoRanch. Participation was about 100-125 men.

THE GATHERING: The Gathering was held on Wednesday nights in both the Winter/Spring and Fall, including a meal, study groups for adults and activities for youth and children. Attendance averaged about 50 a week.



STEPHEN MINISTRIES: A Stephen Minister is a Christian friend with a caring heart with Stephen Ministry training who will walk alongside those in their care for as long as necessary, providing the emotional support and spiritual care they need. Stephen Ministers provide care for people who are hospitalized; new parents; people who are grieving; single parents; divorced; victims of disasters; those who are lonely; those in spiritual crisis; unemployed; homebound; and many others. Stephen Ministers receive 50 hours of training and read 5 books on Christian caregiving. Stephen Leaders take a week's training led by Stephen Ministries of St. Louis.

During the year 2013, fourteen active Stephen Ministers worked with some 20 care receivers, providing about 500 hours of care. Stephen Ministers raised money to send one person to Leadership Training for one week this year.

Current Stephen Leaders include: Freda Jones, PhD; Donna Plewes; Richard Woodmansee; Dale DePue (Pastoral Liaison) and Richard Sternlof, PhD.

LIBRARY: The Library is a rich resource of Christian materials for our congregation. In 2013, updated library software enabled placing the library catalog online through the church's website, making it available to anyone with Internet access. The Library's collection continues to grow in depth and breadth. Carol Harrison oversees all aspects of the library. In 2013, she offered orientation classes to the Women's Circles and extends an invitation to all adults interested in orientation sessions. Diane Brown opens the library each Sunday morning; it remains open from 8 am until the close of the second service. Libby Cahalan maintains all patron and circulation records. Michele Baker has nearly completed entering the children's materials into the computer database. Library volunteers are in the library on Sunday mornings and during Wednesday work sessions.

Sheri Stickley

Co-Chair/Elder

EXPONENTIAL CONNECTIONS



Christian Connections Committee

Bill Roberts, Chair

Members

Linda Birsner
Mona Earnest
Steven Earnest
Moreen Foster
Tim Hast
Jayne Roberts
Ann Ozan Willis

Pastoral Liaison

Martha Turner

Christian Connections

CHRISTIAN CONNECTIONS

Started in 2013, the mission of Christian Connections is "to promote healthy connections throughout the FPCE family to create an environment where discipleship can flourish."

SMALL GROUP MINISTRY

One of the most important ways we connect with each other is through small groups.

During 2013, a survey of our members was conducted (via online and cards distributed during worship service) in order to determine all of the different Study, Service, Support and Social small groups we have at FPCE. We then compiled this information into a document which was made available to the congregation and visitors (both hard copy and via the church website).

MARRIAGE MINISTRY

We added two couples to our Engaged Couples Mentoring Program (bringing the total to eight); these mentors meet with couples who plan to marry in our church and review the FOCCUS evaluation with them.

CHURCH-WIDE EVENTS

We conducted the annual Pentecost Picnic, providing an opportunity for participants to be in relationship with each other and God. These and other events also provide opportunities to welcome the non-churched into Christian relationships.

Bill Roberts

Chair

EXPONENTIAL KIDS



Kids' Ministries Committee & Staff

Robin Riley, Chair/Elder (6/13)

Gary Walke, Elder (6/13)

Members

Kathy Martin

Judy Strahan

Mike Schneider

Amy Mason

Terrie Jones

Sarah Montgomery

Director

Linda Birsner

Associate Director for Childcare & Preschool

Lauren Matthes

Kids' Ministries Coordinator

Kerrie McLish

Ex Officio

Rev. Matt Jones

The year 2013 was an "exponential" year for disciple-making! We continued ministering to the children at Rolling Green Apartments (RGA) through Backyard Bible Study, family holiday parties and summer hot dog suppers. We included the children in our June 2nd Annual UW Sports Camp (June 10-14) which was open to the community.

January 12, 2013 was our famous chili cook-off which raised \$1,500 for kids' camp and retreat scholarships. In February the children made "Blessing Bags for the children of the City Rescue Mission (CRM) during Festival of Faith. In March we had members fill Easter baskets for CRM. April held our children's music program and the Servant Celebration.

Our second UW Sports Camp held in June of 2013 was a big success with 150 kids participating. VBS (June 2-Aug.18) rocked with a "Kingdom Rocks" theme complete with castles, knights and royalty. In the summer we held a trip to Martin Nature Park and a service at the Regional Food Bank. We also hosted two tables on 3G Sunday and the "RU Board?" Family Game Night. Eleven kids attended Camp KidJam from August 1-4 in Wichita Falls, TX. In the early fall of 2013, Rotational Sunday School began on Sunday mornings and BLAST began on Wednesday nights. Then in August, we hosted an Ice Cream Social which served as the fall Parent/Teachers Orientation for parents and Sunday School teachers.

In November, we filled shoe boxes and sent them to children overseas as Christmas presents. We wore and brought pajamas to church for the CRM (City Rescue Mission). In December we caroled for the Hope Center on a blistery winter night. On December 14 we hosted a Christmas Cookie Walk and raised \$1,700. The "Angel Alert!" musical program and breakfast at CRM was cancelled due to weather, however the children gave a brilliant performance at our church on Christmas Eve!

We have had some changes on our team at Kids' Ministry this year. Shelly Fryer retired as Kids' Ministry Associate/Preschool & Childcare Ministries Director after serving faithfully for many years and Sarah Montgomery rolled off of the KM team. Lauren Matthes was hired as Associate Director in May and Kerrie McLish as Kids Ministry Coordinator in November.

We are grateful to the members of our staff, congregation, and volunteers who have enabled Kids' Ministry to be a lively, faith-filled, fun experience for the children of FPC and our community. We are lovingly nurturing children to be disciples for Jesus Christ!

Robin Riley

Chair/Elder

EXPONENTIAL STUDENTS



Brian Wagner, Director of
Emerging Generation & Community Response

Student Ministries Committee & Staff

Brian Horner, Chair Elder
Laura Ganz, Elder

Members

Robert Reid
Charlotte Houck

Director, Emerging Generation & Community Response

Brian Wagner

Associate Director for Middle School Ministries

Wade McKenna (joined 6/2013)

Associate Director for High School Ministries

Rachelle Robinson

Program Coordinator

Christy Ford

Ex Officio

Rev. Matt Jones

Student Ministries

STUDENT MINISTRIES CONCENTRATES ON BUILDING PERSONAL RELATIONSHIPS WITH **EACH STUDENT**, FOCUSING ON THEIR PERSONAL RELATIONSHIP WITH GOD AND ASSISTING THEM TO BE **DISCIPLES**.

THESE RELATIONSHIPS ARE STRENGTHENED THROUGH THE MANY ACTIVITIES OFFERED AT FPCE, INCLUDING SUNDAY SCHOOL, LIFT, SMALL GROUP BIBLE STUDIES, TIGER CLUB, MISSION TRIPS AND OUR SUPPORT OF BOY SCOUTS.

DIRECTOR ACTIVITIES: In August of 2013 our Director of Student Ministries, Brian Wagner, took on a new title, and with that title, more responsibilities within our church. Brian now acts as Director of Emerging Generations and Community Response. He will continue to oversee the Student Ministry, but will also be creating opportunities for our congregation to engage college students and young adults. He will also oversee our congregation's response to community disaster & local missions. He has recently undergone first responder training with HopeForce International and serves as a reservist for that organization.

ASSOCIATE DIRECTOR ACTIVITIES: Directors continue to concentrate on commitment to our youth by attending their athletic events, award ceremonies, band concerts, plays and various activities of FPCE Middle and High School students. Wade and Rachelle showed their support of the students outside the walls of the church, building a stronger relationship with each student.

LIFT: Middle School and High School youth meet separately and then come together for worship as a group. While our student participant numbers have declined this year, the students that attend are active and consistently involved. They present a strong base to build from.

SUNDAY SCHOOL: While the curriculum put in place four years ago (Student Life) remains; the format has been revamped to provide more cohesion and energy. The High School Seniors and college students are studying the book of Ephesians, with an emphasis on finding our identity in Christ. Averaging throughout the year, 54 youth and 21 adult leaders participate weekly.

8TH GRADE CONFIRMATION: Jason Eliot continues to be the primary teacher for the this class, with his wife, Traci, being the coordinator for this year. The 2013-14 class has about 25 students and 10 adult leaders to facilitate small groups.

TIGER CLUB: Our Tiger Club Director, Lindsey Malone, has led our after-school program to new heights. She and her team have effectively facilitated a program that meets weekly to provide life skills, social interaction, faith teaching, and academic tutoring.



MISSION TRIPS: High School students were again prepared to travel to West Virginia to assist those less fortunate. HopeForce International had coordinated the work as they had in the past. Days before leaving a tornado hit Moore and the surrounding area. HopeForce contacted the FPCE team within hours of the tornado and advised that we should reconsider our target. HopeForce came to Edmond and stayed at FPCE with our high school mission team of 22 students. The mission team helped clear trees, tarp roofs, board windows, and clear debris from the Little Ax area. The FPCE teams returned several times in the following months to assist with further clean up. As we enter 2014, we now have in place the means to be a pathway for the next round of storms. We will continue to participate in recovery efforts within the state of Oklahoma.

RETREATS: Rachelle Robinson took Senior High Students on a backpacking trip to Colorado. Celebration was again strongly attended with Rachelle acting as Spiritual Advisor. Middle School attended an end of school retreat at the Jacobs Ladder Camp in November.

ACTIVITIES: High School and Middle School students enjoyed many activities throughout the year. Laser Tag was enjoyed by the Middle School, while our own FPCE RedNeck Olympics included games such as tug of war, enjoying fried oreos and various other "redneck" activities. The students attended Christian band concerts, met for Burrito Thursdito (Thursday lunches in the summer) and various other activities designed to bring them together in Christ.

BOY SCOUTS: Troop 78 continues to flourish with 14 new scouts for a total of 69. The Cub Scout Pack had 16 new boys for a total of 36. The newly created Venture Crew is a co-ed group with 15 members. Seven Scouts earned their Eagle Scout Award in 2013. Tom Moseley, member at FPCE, was awarded the Celtic Cross for exceptional Christian character in a Scout leader.

BIBLE STUDY: Rachelle assumed Alyssa Dees responsibilities for a Middle School Girls Bible Study on Thursday morning and it continues to prosper, despite the early 6:30 am time at a local coffee shop. Eight young women consistently attend.

Brian Horner

Chair

EXPONENTIAL MISSIONS

Missions Committee

David Richard, Chair/Elder
Robert Menja, Elder

Members

John Becker
James Belote
Sid Brown
Tom Langdon
Eunice Menja

Ex Officio

Rev. Matt Jones



During 2013, the members of the Missions Committee met on the first Monday of each month at 6 pm. Pastor Matt Jones advised and assisted the committee. While there are many missions and ministry activities supported by our church, a few areas received special focus in 2013.

The aftermath of the May 2013 tornadoes in Moore and Little Axe sparked an outpouring of physical, medical and spiritual assistance from local and national sources. From these efforts, First Presbyterian Church of Edmond developed a ministry of community response and is positioned to serve as a pathway for other to respond when disasters strike.

In Kenya, the Upendo Children's Home was opened in 2013 – with the help of the church as well as from friends in Edmond. Thirty children now call this their home. About 60 missionaries visited Upendo Children's Home during the summer and over the Christmas holiday. Over 200 children and adults received medical care and prescription medication at the medical clinic during the past year.

The year 2013 saw God working through us in Uganda to help the Presbyterian Church in Africa initiate four new church development projects, open two clinics with full medical staffing and pharmacies, and begin an American curriculum secondary school for those who do not have means to go to boarding school or private day school. One of our members lead a team of house to house evangelists in Akalabai village, where a new church development is well under way. Hopefully, this new congregation will obtain land and begin a new building in the near future. We are supporting the seminary in Mbale, Uganda which is training pastors for the effort of new church planting in East Africa.

Our congregation continues to sponsor the following missionaries:

BRANDON BOYD, CAMPUS CRUSADE FOR CHRIST; KIM DENNENY, MOI FRONTIERS, KE, STUMO,
THE RUIZ FAMILY, THE TAPPERT FAMILY, STEVE & BARBARA JOHNSTON AND YOUTH WITH A MISSION

David Richard

Chair

EXPONENTIAL SERVANTS

CALLED TO SERVE.

The needs of our congregation are great but the hearts and hands of our membership are even greater! Caring for one another is one of the ways we serve the FPCE Community. The Congregational Care Ministry coordinates benevolence, bereavement, hospital care, pastor-on-call, needs of the aging and other areas of need.



Congregational Care

Parish Nurse

Denise Lamb served as our Parish Nurse. She coordinated the church owned medical equipment, worked with the ECP Director, and served on a committee which reviewed the physical plant of the church and how it might best serve the needs of the congregation. The Parish Nurse affirmed the church as a place for prevention of illness or “disease” and teaches and supports living with ease physically, spiritually, emotionally and socially.

Turning Point Ministries

In 2013, many in our congregation provided financial support and volunteer labor for this Edmond affordable housing ministry. Several members of FPCE served in 2013 on the Board of Turning Point: Frank Smith, Kari Galliard, Carol Lamb, Don Boyd, Andy Fugitt, Bob Turner, Brad Windsor and Linda Boyce. Senior Board members (from FPCE) are Martha Turner and Nancy Smith. A new home for a FPCE member is currently under construction in Legacy Station.

A new area, Heritage Village, a 37 home community was set for development on Fretz. In December 2013, the City of Edmond committed up to \$500,000 for the infrastructure

of Heritage Village. The money will go towards streets, sidewalks, sewer, storm sewer and water. This funding will cover approximately 40% of the development costs. A new website was developed (www.turningpointoklahoma.org) and a new monthly e-newsletter began in September.

The Reserves

This group met three times in 2013 for a “State of the Church” update provided by Dr. Ellass. The Reserves are composed of approximately 75 Elders and Deacons who are not actively serving on the Board of Deacons or Session. Members of The Reserves served in various ministry capacities within the life of the church on an “on call” basis.

Prayer Ministry

A weekly prayer request list was emailed to members and individual prayer requests were sent throughout the week. The ongoing needs of the congregation/family/friends were prayed for during a weekly worship service attended by the pastors and designated Deacons. To receive the prayer list by email, contact the church office at 341-3602.

Martha Turner

Congregational Care Coordinator

EXPONENTIAL SERVANTS



CALLED TO LOVE.

The Deacons serve on one of three committees and provide services, support and encouragement to our congregation and to our community.

Deacon Leaders

Moderator Michele Baker	Secretary Bill Hainer
Vice Moderator Gwen Boots	Ex Officio Martha Turner

Our Deacons

Senior Adults & Special Needs

Sharon Pace, Coordinator	Marsha Bath	Sharon Boecking
Kristin Davis	Kendall Elass	Judy Gross
Carol Lamb	Dwight Schulke	

The members of the committee contact all homebound monthly, provide transportation as needed for doctors visits, or daily needs and Sunday or church events, pray for all senior adults and those with special needs, provide seasonal baskets to homebound. A highlight is the Tealridge Tea Party and the Bible Study.

Illness/Crisis/Bereavement

David Houck, Coordinator	Cheri Blackwood	Gwen Boots
Traci Eliot	Janet Kennedy	Judy Morrison
Dale Shogren	Gina Sloniker	Mark Veazey

The members of this committee provide a family meal or reception after a funeral, pray for families who have experienced a loss, provide a host/hostess for memorial services or funerals, communicate with bereaved through visits, cards, phone calls, minister to family members as needed and provide six month and one year follow up with family. The Deacon Fund Policy is also administered by this committee.

Welcoming & Outreach

Terri McGee (Coordinator)	Kenny Brown	Nancy Brown
Bill Hainer	Asher Martel	Amy Mason
Eunice Menja	Richard Woodmansee	

Welcoming & Outreach help organize the Christmas gift tree for Grace Living Center (approximately 98 presents distributed in 2013), maintained the prayer list of FPCE college students and those serving in military, prepared and mailed care packages to college students during finals week, and provided greeters at doors for services on Sunday. The team provided bus transportation for our senior adults to church and church events. Time and tool needs of our elder members and single mothers are handled by this committee.

The Deacons also serve as Deacon of the Week where they help count the offering and serve as a greeter on their Sunday. Some Deacons sign up for hospital visitation each month where they visit members in the hospital and in long term care facilities. A revised Visitation policy was established to help facilitate more involvement among our congregation. In addition, the Homebound Communion Policy was revised under ECO and is overseen by Deacon Dwight Schulke, with plans to keep the oversight of this policy within the Board of Deacons.

Michele Baker
Moderator

EXPONENTIAL ECP

THE EARLY CHILDHOOD PROGRAM (ECP) AT FIRST PRESBYTERIAN CHURCH OF EDMOND CONTINUES TO ENHANCE THE LIVES OF MANY INDIVIDUALS AND FAMILIES IN THE EDMOND AND OKC AREA THROUGH THE SCHOOL'S MISSION AND VISION.

OUR MISSION IS TO PROMOTE THE DEVELOPMENT OF EACH CHILD PHYSICALLY, EMOTIONALLY, INTELLECTUALLY, SOCIALLY, AND SPIRITUALLY AT THE CHILD'S OWN PACE, THROUGH A DEVELOPMENTALLY APPROPRIATE CURRICULUM.

ECP'S VISION IS TO PROVIDE MODEL EARLY CHILDHOOD PROGRAMS FOR THE COMMUNITY THROUGH EDUCATIONAL OUTREACH BASED ON CHRISTIAN VALUES.

All of our classes are taught by warm, loving, experienced teachers who strive to make ECP a place where children can be children in a world that sometimes forgets the importance of childhood. In classrooms with small student/teacher ratios, children are actively involved in the learning process through play and exploration using all of the senses, through large group and small group experiences, and through activities designed to foster large and fine motor development. In addition, children attend weekly Music class and Bible Time. We are a Christian school and want children to experience the love of God and to learn His word. Thus, we incorporate Bible stories, songs, and activities that teach Biblical truths into our day, and our teachers strive to create an environment in which each child can experience God's amazing love while they are at ECP.

The ECP Staff, Committee and Parent's Group worked together in 2013 to ensure that ECP needs were identified, discussed and handled appropriately. With surplus and additional raised funds, ECP is consistently able to help acquire and maintain classroom and outdoor equipment. Scholarship funds are available and awarded, as needed. All staff participates in a minimum of 20 hours per year of continuing education, and in 2013, the entire ECP staff was trained in the "Handwriting Without Tears" curriculum.

The First Presbyterian ECP employs and supports 27 educators who have a love for God and share that love with approximately 200 children, currently enrolled, from 1 year of age to 6 years of age. The majority of our teachers hold a college degree, most in the areas of Early Childhood Education or Elementary Education.

This year, ECP was honored to be the 2013 recipient of Metro Family Magazine's reader's choice award for "Best Mother's Day Out/ Children's Day Out" in the Oklahoma City Metropolitan area. The winners will be announced in the February 2014 edition of the magazine.

We are so blessed to be a part of God's work through this wonderful outreach, touching the lives of many beautiful children and their families.

Tom Langdon, Chair

Mary Singleton, Director of ECP



Mary Singleton, Director of ECP

Early Childhood Program Committee

Tom Langdon, Chair

Members

Kristin Emerson
Danielle Herndon
Myrlane Mendenhall
Leslie Roubik
Ann Woodmansee

Director of ECP

Mary Singleton

Pastor Liason

Dale DePue



EXPONENTIAL SCOUTS



Troop 78 Boy Scouts and Cub Scouts

The Boy Scout organizations chartered to the Church have been very active and have concluded another successful year. Troop 78 has completed its 82nd year of service to the church and the community, being chartered by the First Presbyterian Church of Edmond in 1931.

Robert Reid continues to serve as the Charter Organization Representative for the Troop, the Pack and the Venture Crew (a co-ed, high-adventure scouting group for youth aged 14 to 21). David Bailey continues as the Committee Chair for all three groups. Mr. Mark Denney serves as the Cubmaster for Pack 78 and is ably assisted by Mark and Kristin Davis, as well as David Houck. Dr. Dallas New continues as the Scoutmaster of the Troop. Mrs. Sheryl Morsman has turned over leadership of the Venture Crew to Mr. Tom Rossiter for the upcoming year.

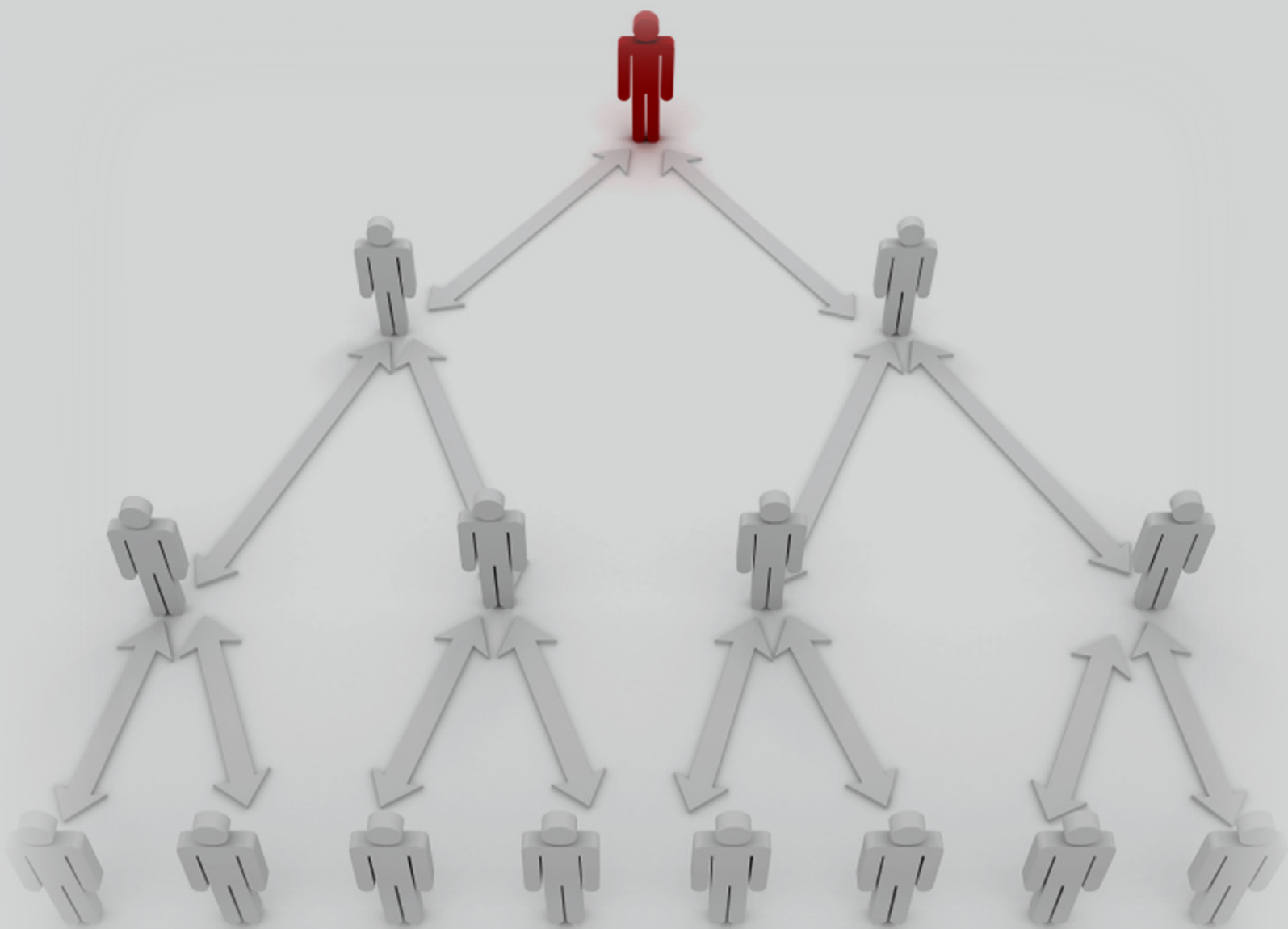
2013 began with Sam Wood serving as Senior Patrol Leader of the Troop. Keith Gage took over in February and served as Senior Patrol Leader until June when he turned over the reins to Austin Martin who serves now in that capacity.

The Troop recruited 14 new members in 2013 and ended the year with 69 youth. The Pack recruited 16 new members in 2013 and ended the year with 36 youth. The Venture Crew ended the year with 15 youth.

Seven scouts earned their Eagle Scout rank in Troop 78 this past year: Grant Wilkinson, Tyler Delpha, Sam Prutsman, Jackson Mayberry, Jacob Moore, Cody Chew and Bradley Chew. This makes well over 350 youth who have earned their Eagle rank with Troop 78 since 1931. **Six scouts have completed the requirements to earn their Arrow of Light award in Pack 78:** Garrett Cannon, Mitchell Davis, Derrick Denney, Abram Gruen, Jacob Houck and Adam Ratke.

Also in 2013, Tom Mosley was awarded the Celtic Cross award for his many years of devoted service to the BSA and the youth of this church.

Thank you for your support in 2013 and we are looking forward to a fun and successful 2014!



FIRST PRESBYTERIAN
CHURCH OF EDMOND

1001 South Rankin Street | Edmond, Oklahoma 73034
405.341.3602 | www.fpcedmond.org